

mindray

Accessories for operating tables









mindray
healthcare within reach



01-12 General Accessories

01



13-21 Head Accessories

13



22-27 Leg Accessories

22



28-30 Back Accessories

28



31-36 Accessories for Gynecology & Urology

31



37-44 Orthopedic Accessories

37



45-46 Accessories for Controlling
and Easier Application

45



47-50 Comfort Solution Accessories

47

HyBase V8

Electro-Hydraulic Operating Table

With increasingly complex surgical procedures, today's surgical environment requires a table that instantly adapts to all versatility to provide the highest level of care. HyBase V8 comes with an extreme weight capacity of up to 460 kg, delivering the highest safety and stability in any position.



4 swivel castors



E-drive function



Intelligent Collision Protection System

- An extreme load capacity of up to 460 kg
- All positions are permitted up to overall load of 250 kg
- The longitudinal shift up to 350 mm, free access to C-arm
- 595 mm lowest table position for neurosurgery, 1,095 mm highest table position for orthopedics
- Intelligent Collision Protection System to stop the table movement before collision occurs
- Electric movements, such as powered body elevator, powered leg plates and E-drive function, adapting to various surgical needs
- Bluetooth hand control for unobstructed control in operating rooms

HyBase V8 Classic

Electro-Hydraulic Operating Table

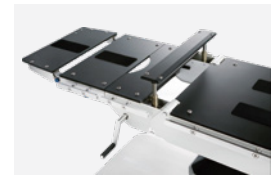
HyBase V8 Classic, the sequel of HyBase V series, is a new competitive model of Mindray operating family. It not only inherits the highlights of HyBase V series, but also conveys new function which is able to upgrade the safety in OR. As surgical procedures become increasingly complex, the expanding HyBase V series family with different models has been specifically designed to address various customer needs.



With the One-button design



Independent Manual Override System



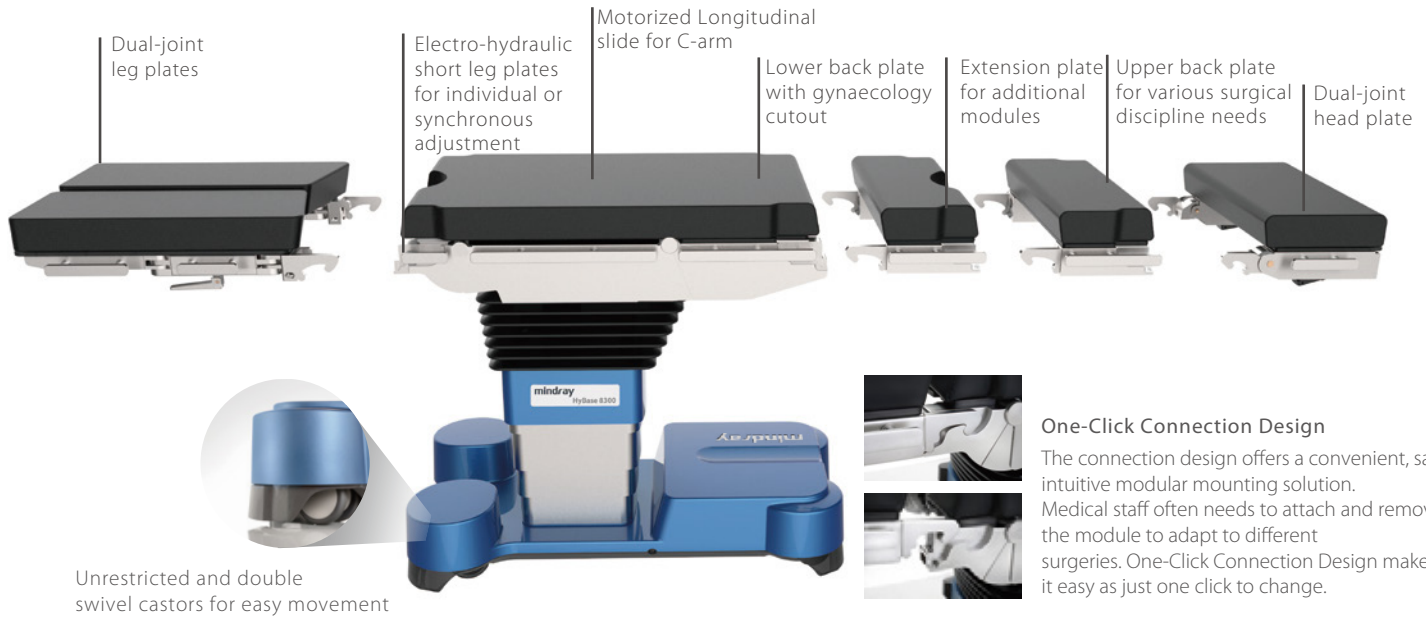
Built-in Body Elevator

- An extreme load capacity of up to 460 kg
- All positions are permitted up to overall load of 250 kg
- The longitudinal shift up to 350 mm for free to access to C-arm
- 600mm lowest table position for neurosurgery, while 1,050 mm highest table position for orthopedics
- 12 electric movements, such as table top up/down, slope and tilt, adapting to various surgical needs
- Bluetooth hand control for unobstructed control in operating rooms
- Independent manual override system for dual safety
- Triple-layer decompression pad to redistribute the patient's weight

HyBase 8300/8500

Electro-Hydraulic Operating Table

Engineered for increasingly complex surgical scenes, HyBase 8300/8500 comes with extreme weight capacity up to 460 kg guaranteeing highest safety and stability in any position. With longitudinal slide up to 480 mm, it is ideally suitable for cardiovascular surgery with C-arm. The modular design tabletop enables it to be tailored for various surgical discipline needs.

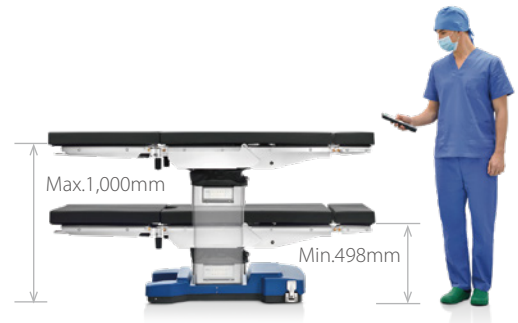


- Longitudinal slide up to 480 mm for free access to C-arm
- Extreme weight load capacity of 460 kg with highest safety and stability
- Modular design tabletop tailored for various surgical discipline needs
- Intelligent anti-collision system to avoid table components collision during movement
- Multi-layer decompression pad with waterproof and seamless design
- 575 mm lowest table position for Neurosurgery
- IR wireless remote control system for free movements in OR

HyBase 6100

Electro-Hydraulic Operating Table

Providing a better clinical use's scenario, HyBase 6100 is designed with a much lower table height of 498 mm specially for neurosurgery and minimally invasive surgery, a more user friendly base cover, as well as a more convenient wireless remote control system. Moreover, with longitudinal slide up to 320 mm, the table is ideally suitable for cardiovascular surgery or spinal surgery with C-arm. All in all, HyBase 6100 maximizes the flexibility of operating table's versatility.



- Longitudinal slide up to 320 mm for free access to C-arm
- Maximum overall load up to 360 kg in normal position
- Multi-layer decompression pad with waterproof and seamless design
- 498 mm lowest table position for Neurosurgery and Minimally Invasive Surgery
- Wireless remote control system
- Foot pump Manual Override System

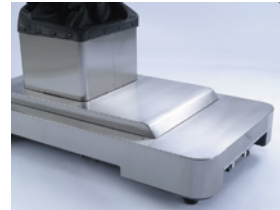
HyBase 3000

Electro-Hydraulic Operating Table

Proper annotation of "cost-effective". With most acceptable price, gaining the most functional Electro-hydraulic table. No matter what principle surgery was, it can always find a way to meet your requirement.



Foot break provides Maximum safety and easy use.



Battery power can support 50-80 operations.
Backup control keys in case of hand control failure.
Optional stainless steel cover.

- Multi-layer decompression pad with waterproof and seamless design
- Longitudinal slide up to 300 mm for free access to C-arm
- Max. overall load up to 230 kg in normal position
- Battery power for 50-80 operations
- Mechanical brake system for optimum stability
- Return to original position with one button
- Flex & Reflex position with one button
- Radiolucent table plate for free C-arm access
- Three control panels including remote panel, backup control & foot switch

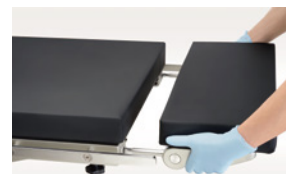
UniBase 30

Electro-Hydraulic Operating Table

During the surgery, a good operating table is the cornerstone of success. Engineered for increasingly complex surgical scenes, UniBase 30 needs least effort and time to position the patient in a safe, comfortable and efficient way, providing an economic solution without straining on your hospital's budget.



Versatile & Ergonomic Design



Detachable Head Plate



Adjustable Body Elevator (optional)



Pedal Floor Lock

- Weight capacity of 185 Kg in normal position
- Longitudinal shift (optional) with 300 mm
- Adjustment body elevator (optional) with 120 mm
- Battery power for about one week time
- Mechanical brake system for optimum stability
- Detachable & split leg plate for lithotomy position

General Accessories

The Mindray table accessory portfolio provides optimal patient positioning and ideal working conditions for the medical staff. With robust design, ease-to-use and ergonomic functionality, Mindray offers standard table accessories that meets the requirements of nearly every surgical discipline.



General Accessories



0092-30-102657 A33XX Light quadrate clamp

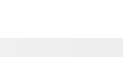
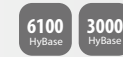
Accessory Name:

Universal clamp (Light, one-piece, quadrate)

Application:

To attach to the side rail for connecting accessories with the table

Compatible with:



0092-30-102655 A32XX Heavy quadrate clamp

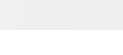
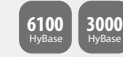
Accessory Name:

Universal clamp (Heavy, one-piece, quadrate)

Application:

To attach to the side rail for connecting accessories with the table

Compatible with:



0092-30-102658 A34XX Light radial clamp

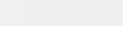
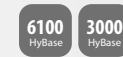
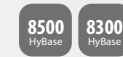
Accessory Name:

Universal clamp (Light, one-piece, radial)

Application:

To attach to the side rail for connecting accessories with the table

Compatible with:



General Accessories



0092-30-102656 A35XX Heavy radial clamp

Accessory Name:

Universal clamp (Heavy, one-piece, radial)

Application:

Attach to the side rail for connecting accessories with the table

Compatible with:

V8 / V8^{classic}
HyBase

8500
HyBase

8300
HyBase

6100
HyBase

3000
HyBase

30
UniBase



115-038243-00 A09XX Strap clamps, a pair

Accessory Name:

Strap clamps, a pair

Application:

To fix the body strap in the intended position on the side rail

Compatible with:

V8 / V8^{classic}
HyBase

8500
HyBase

8300
HyBase

6100
HyBase

3000
HyBase

30
UniBase



0092-30-102643 A60XX Infusion holder

Accessory Name:

Infusion pole with one piece with radial universal clamp

Application:

To hang the infusion bag in the procedure

Compatible with:

V8 / V8^{classic}
HyBase

8500
HyBase

8300
HyBase

6100
HyBase

3000
HyBase

30
UniBase

General Accessories



0092-30-102645 A12XX Light anesthesia frame

Accessory Name:

Anesthesia Frame, one piece with quadrate universal clamp

Application:

To hang the anesthesia screen during the surgery

Compatible with:

V8 / V8^{Classic}
HyBase

8500
HyBase

8300
HyBase

6100
HyBase

3000
HyBase

30
UniBase



115-005689-00 A10XX U-Shaped anesthesia frame

Accessory Name:

"U" shape anesthesia frame with clamps

Application:

To hang the anesthesia screen during the surgery

Compatible with:

V8 / V8^{Classic}
HyBase

8500
HyBase

8300
HyBase

6100
HyBase

3000
HyBase



0092-30-102654 A11XX Heavy anesthesia frame

Accessory Name:

Anesthesia frame, "L" shape design with two adjustable tubes, one piece with radial universal clamp

Application:

To hang the anesthesia screen during the surgery

Compatible with:

V8 / V8^{Classic}
HyBase

8500
HyBase

8300
HyBase

6100
HyBase

3000
HyBase

30
UniBase

General Accessories



115-083097-00 A42XX Light arm board

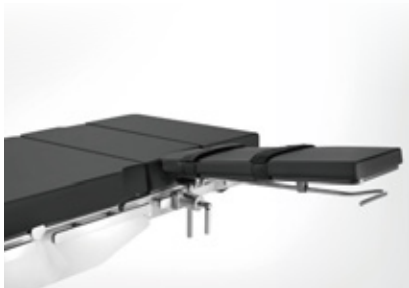
Accessory Name:

Light arm board with rotation function in horizontal position (with integrated clamp, pad & two pieces of fasten belt for each arm board), a pair

Application:

To support and fasten the arm of the patient to avoid unexpected moving

Compatible with:



115-083165-00 A43XX Heavy arm board, SFC

115-083164-00 A43XP Heavy arm board, PU

Accessory Name:

Heavy arm board with up & down and rotation function (a heavy radial universal clamp, pad & two pieces of fasten belt for each arm board), a pair(SFC/PU)

Application:

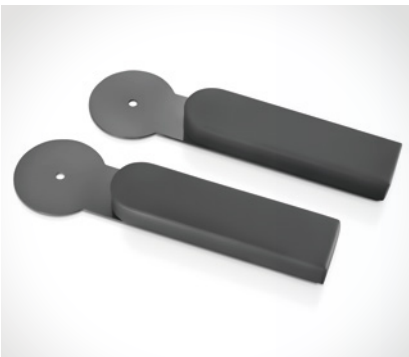
To support and fasten the arm of the patient to avoid unexpected moving

Compatible with:

A43XX



A43XP



115-030153-00 A38XX Carbon fiber arm board, a pair

Accessory Name:

Carbon fiber arm board, with special foam core pad, a pair

Application:

A carbon fibre arm board which includes a memorised foam pad. This can work with the 1180 cardiac operating plate which provides support for the patient's upper extremities in a supine position

Compatible with:



General Accessories



115-005693-00 A41XX Double arm board

Accessory Name:

Double layer arm support with one piece of heavy radial clamp for lateral position, with the pad

Application:

To support and fasten both of the arms of the patient as a lateral position to avoid unexpected movement

Compatible with:

V8 / V8^{Classic}
HyBase

8500
HyBase

6100
HyBase

30
UniBase

8300
HyBase

3000
HyBase



0092-30-102648 A36XX Arm board for lateral position

Accessory Name:

Lateral position arm support with one piece of radial universal clamp, with the pad

Application:

To support and fasten the upper arm of the patient in lateral position

Compatible with:

V8 / V8^{Classic}
HyBase

8500
HyBase

6100
HyBase

30
UniBase

8300
HyBase

3000
HyBase



115-083163-00 A37XX Arm posturing device

Accessory Name:

Arm posturing device, a pair
Note: this accessory includes side rail extension(HySRE-2)

Application:

During surgeries, it is used to allow support for patient's arm to effectively protect patient's brachial nerves

Compatible with:

V8 / V8^{Classic}
HyBase

8500
HyBase

6100
HyBase

30
UniBase

8300
HyBase

3000
HyBase

General Accessories



115-007051-00 A18XX Suspended arm strap

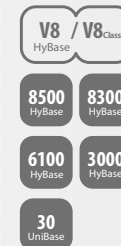
Accessory Name:

Suspended arm strap, mounted on the anesthesia frame

Application:

Attach to frame for hanging the hand of the patient

Compatible with:



115-083162-00 A19XX Wristlet

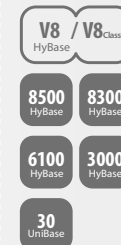
Accessory Name:

Wristlet with a light quadrate clamp, a pair

Application:

Attach to the side rail rail for fastening the hand of the patient

Compatible with:



0092-30-102640 A13XX Body strap

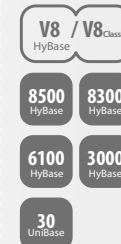
Accessory Name:

Body strap, one-piece

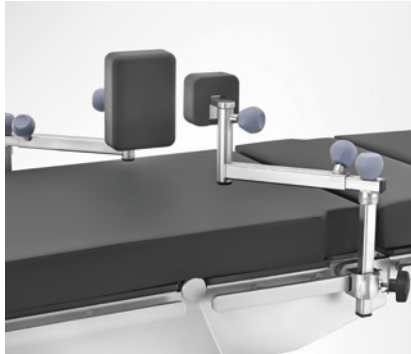
Application:

To fasten the body of the patient to the table during the surgery

Compatible with:



General Accessories



115-083160-00 A17XX Heavy body support

Accessory Name:

Heavy body support (with heavy quadrate universal clamp and the pad), a pair (including large body support and small body support)

Application:

To support the body of the patient for avoiding unexpected movement

Compatible with:

V8 / V8^{Classic}
HyBase

8500
HyBase

8300
HyBase

6100
HyBase

3000
HyBase

30
UniBase



0092-30-102650 A16XX Light body support, a pair

Accessory Name:

Two pieces of body support with a pair of quadrate universal clamps and the pad

Application:

To support the body of the patient for avoiding unexpected movement

Compatible with:

V8 / V8^{Classic}
HyBase

8500
HyBase

8300
HyBase

6100
HyBase

3000
HyBase

30
UniBase



115-083147-00 A15XX Heavy shoulder support

Accessory Name:

Heavy shoulder support (with heavy quadrate universal clamp and pad), a pair

Application:

To support the shoulder of the patient for avoiding unexpected movement

Compatible with:

V8 / V8^{Classic}
HyBase

8500
HyBase

8300
HyBase

6100
HyBase

3000
HyBase

30
UniBase

General Accessories



0092-30-102649 A14XX Light shoulder support, a pair

Accessory Name:

Shoulder support (left and right, pair with quadrate universal clamps and pad)

Application:

To support the shoulder of the patient for avoiding unexpected movement

Compatible with:

V8 / V8^{Classic}
HyBase

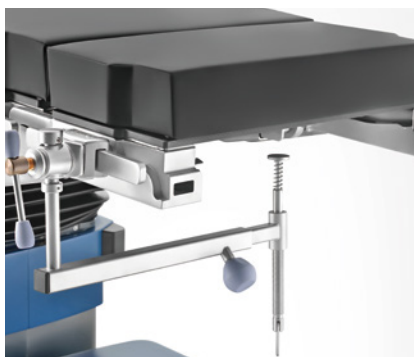
8500
HyBase

8300
HyBase

6100
HyBase

3000
HyBase

30
UniBase



0092-30-102641 A53XX Cassette fixer

Accessory Name:

X-ray Cassette fixer with a light radial clamp (compatible with multi-size)

Application:

To fix the X-ray cassette under the table

Compatible with:

V8 / V8^{Classic}
HyBase

8500
HyBase

8300
HyBase

6100
HyBase

3000
HyBase

30
UniBase



0092-30-102639 P02XX Pad for intervertebral disc Ops

Accessory Name:

Intervertebral disc operation pad (Memorise foam, one piece)

Application:

To support the body in intervertebral operating position

Compatible with:

V8 / V8^{Classic}
HyBase

8500
HyBase

8300
HyBase

6100
HyBase

3000
HyBase

30
UniBase

General Accessories



- 115-052219-00 HyBF-1 Bow frame for spine operation**
- 115-053656-00 A76XX Foam head block stand of bow frame**
- 115-053654-00 A75XX Pad set for bow frame, a pair**

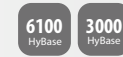
Accessory Name:

Bow frame for spine operation
Foam head block stand of bow frame
Pad set for bow frame, a pair

Application:

Bow frame is adjustable for length and width according to different patients
Foam head block support the head in prone position
Pad set give a comfortable support for the chest

Compatible with:



- 115-052221-00 A73XX Bow frame cart**

Accessory Name:

Bow frame cart, four universal castors

Application:

It is convenient for the bow frame to store and move

Compatible with:



- 115-052223-00 A74XX Bow frame disposable cover(6 sets)**

Accessory Name:

Disposable covers for bow frame(6 pcs)

Application:

To prevent the pad getting dirty during spine operation

Compatible with:



General Accessories



115-033429-00 A30XX Side rail extension

Accessory Name:

Side rail extension

Application:

Can extend the side rail toward the two ends of the operating table, to provide more space for installation of other accessories, such as leg support and foot plate

Compatible with:

V8 / V8^{Classic}
HyBase

8500
HyBase

8300
HyBase

6100
HyBase

3000
HyBase

30
UniBase



115-039082-00 A31XX Side rail extension (HySRE-2)

Accessory Name:

Side rail extension (HySRE-2), bent type

Application:

Can extend the side rail towards the two sides of the operating table, to provide more space for installation of other accessories

Compatible with:

V8 / V8^{Classic}
HyBase

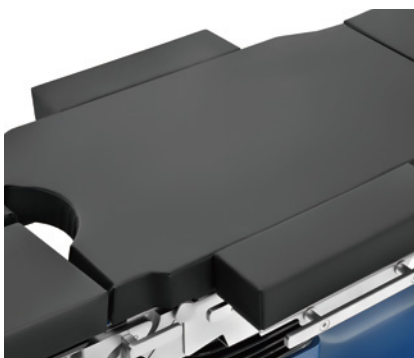
8500
HyBase

8300
HyBase

6100
HyBase

3000
HyBase

30
UniBase



115-030814-00 A54XX Table width extender, a pair

Accessory Name:

Table width extender, to extend the table top, a pair

Application:

During surgeries, it is used to widen the operating table top and provide comfortable lying for larger-sized patients

Compatible with:

V8 / V8^{Classic}
HyBase

8500
HyBase

8300
HyBase

6100
HyBase

3000
HyBase

30
UniBase

General Accessories



115-012837-00 A45XX Mayo instrument tray

Accessory Name:

Mayo instrument tray with a light radial clamp

Application:

It is used to place the instruments required during the operation

Compatible with:

V8 / V8^{Classic}
HyBase

8500
HyBase

8300
HyBase

6100
HyBase

3000
HyBase

30
UniBase



115-012839-00 A44XX Instrument tray

Accessory Name:

Instrument tray with a light radial clamp

Application:

It is used to place the instruments required during the operation

Compatible with:

V8 / V8^{Classic}
HyBase

8500
HyBase

8300
HyBase

6100
HyBase

3000
HyBase

30
UniBase

Head, Back and Leg Accessories

Modular design table top is tailored for various surgical discipline needs, which also can low down the cost of the hospital as they only need to buy the specific module for more surgeries not one more table.



Head Accessories



115-028574-00 813XX Head plate
115-028576-00 813CX Head plate, CF

Accessory Name:

Head plate, single-joint, carbon fiber (optional), with special foam core pad

Application:

During surgeries, it is used to provide support to the patient's head

Compatible with:



115-028703-00 801XX 2-joint head plate
115-028705-00 801CX 2-joint head plate, CF

Accessory Name:

Head plate, dual-joint, carbon fiber (optional), with special foam core pad

Application:

During surgeries, it is used to provide support to the patient's head with a double-joint design

Compatible with:



115-052229-00 807XX Back plate for shoulder operation

Accessory Name:

Back plate for shoulder operation, with helmet

Application:

Provide a stable support for the shoulder operation by beach-chair position

Compatible with:



Head Accessories



115-079674-00 A63XX 2-joint head plate
115-079675-00 A63CX 2-joint head plate, CF

Accessory Name:

Head plate, dual-joint, carbon fiber (optional), with special foam core pad

Application:

To support the head of the patient

Compatible with:



115-079669-00 A66XX Back plate for shoulder operation

Accessory Name:

Head plate, single-joint, with special foam core pad

Application:

To support the head and back of the patient providing a stable support for shoulder operation

Compatible with:



115-079720-00 A69XX Head plate
115-079721-00 A69CX Head plate, CF

Accessory Name:

Head plate, single-joint, with special foam core pad

Application:

To support the head of the patient

Compatible with:



Head Accessories



115-085098-00 A84XX Head plate
115-085099-00 A84CX Head plate, CF

Accessory Name:

Head plate, single-joint, with special foam core pad

Application:

Featherweight head plate to lighten your work.
The head plate is used to support the patient's head during the surgery

Compatible with:



115-081869-00 A05XX Shoulder chair dolly

Accessory Name:

Shoulder chair dolly, a dolly to place the back plate for shoulder operation

Application:

To place the back plate for shoulder operation (115-081868-00)

Compatible with:



115-081868-00 A04XX Back plate for shoulder operation

Not applicable for European and Australian markets

Accessory Name:

Back plate for shoulder operation

Application:

To support the head and back of the patient providing a stable support for shoulder operation

Compatible with:



Head Accessories



0092-30-102642 A48XX Adaptor for head positioning ACCs

Accessory Name:

Neurosurgical head support adapter

Application:

To connect the adjustable horseshoe headrest, headrest system

Compatible with:



115-007045-00 A51XX Ophthalmic operating plate

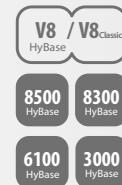
Compatible with:

Accessory Name:

Ophthalmic operating plate you should select the Neurosurgical head support adapter simultaneously

Application:

To support the head of the patient and support the arm of the surgeon during the surgery



115-059313-00 A46XX Guiding roller for cervix traction

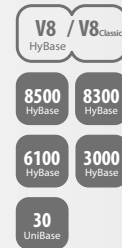
Compatible with:

Accessory Name:

Adjustable guiding roller for cervix traction, only use with 115-059309-00

Application:

It is used for the cervical vertebra traction of the spine operation



Head Accessories



115-034319-00 A47XX Univ. adaptor for head position

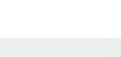
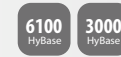
Accessory Name:

Neurosurgical head support adapter(Type II)

Application:

To connect the adjustable horseshoe headrest, headrest system

Compatible with:



115-059311-00 A52XX Wrist support

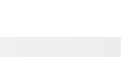
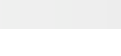
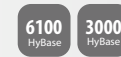
Accessory Name:

Adjustable wrist support with foam, only use with 115-059309-00

Application:

Supporting the wrist stably to reduce the surgeon's fatigue

Compatible with:



DJ15-0101-301 Adult horseshoe headrest w.Ext
DJ15-0101-302 Pedia horseshoe headrest w.Ext

Accessory Name:

Adult horseshoe headrest w.Ext
 Pedia horseshoe headrest w.Ext

Application:

A solution for supporting the head more safely and comfortably, used with headrest system

Compatible with:



Head Accessories



DJ15-0101-001 Aluminum headrest System

Accessory Name:

Aluminum headrest system (Including base unit, swivel adaptor and skull clamp; not including skull pins)

Application:

For supine, prone, lateral positions, please select the adaptor for head position (PN: 0092-30-102642 or 115-034319-00); For sitting positions, please select crossbar adaptor (PN: DJ15-0101-101); only allow to sale with the table together as a package

Compatible with:



DJ15-0101-003 LUCENT radiolucent headrest system

Accessory Name:

Radiolucent headrest system (Including base unit, swivel adaptor, transitional member and skull clamp; not including skull pins)

Application:

Radiolucent for C-arm access, only allow to sale with the table together as a package

Compatible with:



Head Accessories



DJ15-0101-101 Crossbar adaptor with clamps

Accessory Name:

Crossbar adaptor with clamps for headrest system in sitting positions

Application:

Only allow to sale with the table together as a package

Compatible with:



DJ15-0101-201 Titanium skull pin, adult (3 pcs)

DJ15-0101-202 Titanium skull pin, pedia (3 pcs)

DJ15-0101-203 SS skull pins, adult (3 pcs)

DJ15-0101-204 SS skull pins, pediatric (3 pcs)

Accessory Name:

Titanium skull pin, adult (3 pcs)

Titanium skull pin, pedia (3 pcs)

SS skull pins, adult (3 pcs)

SS skull pins, pediatric (3 pcs)

Application:

Only allow to sale with the table together as a package

Compatible with:



Head Accessories



115-075152-00 Reison head rest

Accessory Name:

Head rest, Reison version

Application:

To support the head of the patient

Compatible with:

V8 / V8^{Classic}
HyBase

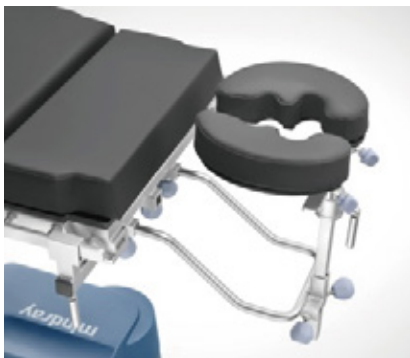
8500
HyBase

8300
HyBase

6100
HyBase

3000
HyBase

30
UniBase



115-059309-00 A50XX Head rest

Accessory Name:

Horseshoe shaped head rest with two installation bars and special foam core pad, height and width adjustable you should select the Neurosurgical head support adaptor simultaneously

Application:

A solution for supporting the head safely and comfortably. You should select the adaptor for head position simultaneously

Compatible with:

V8 / V8^{Classic}
HyBase

8500
HyBase

8300
HyBase

6100
HyBase

3000
HyBase

30
UniBase



115-012835-00 A49XX Head rest, HyHead-2

Accessory Name:

Adjustable horseshoe shaped head rest with two installation bars you should select the Neurosurgical head support adaptor simultaneously

Application:

To support the head of the patient providing a stable support for Neurosurgery operation. You should select the adaptor for head position simultaneously

Compatible with:

V8 / V8^{Classic}
HyBase

8500
HyBase

8300
HyBase

6100
HyBase

3000
HyBase

Leg Accessories



115-028578-00 812XX Leg plate, a pair
115-028580-00 812CX Leg plate, a pair, CF

Accessory Name:

Leg plate, single-joint, carbon fiber (optional), with special foam core pad, a pair

Application:

During surgeries, it is used to provide support to the patient's leg

Compatible with:



115-028582-00 804XX 2-joint leg plate, a pair
115-028584-00 804CX 2-joint leg plate, a pair, CF

Accessory Name:

Leg plate, dual-joint abduction, carbon fiber (optional), with special foam core pad, a pair

Application:

To support the legs of the patient during the surgery.
A double-joint design, helps doctors get closer to the surgical site

Compatible with:



115-033426-00 805XX 4-part leg plate
115-038559-00 805CX 4-part leg plate, CF

Accessory Name:

Leg plate, 4 sections, carbon fiber (optional), with special foam core pad, a pair, for HyBase 8300/8500

Application:

Can achieve the abductive function of normal leg plates and horizontal abductive function of 2-joint leg plates; the second joint leg plate can be folded upward and downward, abducted and can extend toward the leg end, and is detachable; include a mattress made of memory foam. It is able to assist in achieving kneeling position, lithotomy position and supine position

Compatible with:



Leg Accessories



115-035792-00 811XX One-section leg plate
115-037739-00 811CX One-section leg plate, CF

Accessory Name:

One-section leg plate, carbon fiber(optional), with special foam core pad, for HyBase 8300/8500

Application:

To support the leg with one-section plate during the surgery

Compatible with:



115-005685-00 A57XX One-section leg Plate, SFC
115-005683-00 A57XP One-section leg Plate, PU

Accessory Name:

One-section leg plate for PU or SFC (Special Form Core) mattress

Application:

To support the leg with one-section plate during the surgery

Compatible with:

A57XX



A57XP



115-085100-00 A68XX One-section leg plate
115-085101-00 A68CX One-section leg plate, CF

Accessory Name:

One-section leg plate, carbon fiber(optional), with special foam core pad

Application:

To support the leg with one-section plate during the surgery

Compatible with:



Leg Accessories



115-079672-00 A64XX 2-joint leg plate
115-079673-00 A64CX 2-joint leg plate, CF

Accessory Name:

Leg plate, dual-joint abduction, carbon fiber (optional), with special foam core pad, a pair

Application:

To support the legs of the patient during the surgery.
A double-joint design helps doctors get closer to the surgical site

Compatible with:



115-079722-00 V02XX Leg plate
115-079723-00 V02CX Leg plate, CF

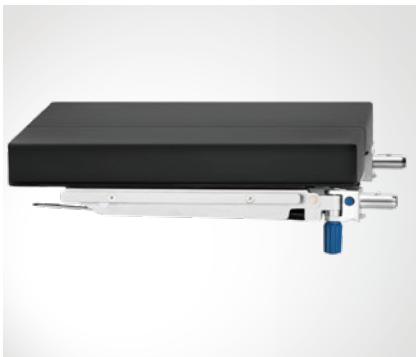
Accessory Name:

Leg plate, single-joint, carbon fiber (optional), with special foam core pad, a pair

Application:

To support the legs of the patient during the surgery

Compatible with:



115-085096-00 A85XX Leg plate
115-085097-00 A85CX Leg plate, CF

Accessory Name:

Leg plate, single-joint, carbon fiber (optional), with special foam core pad, a pair

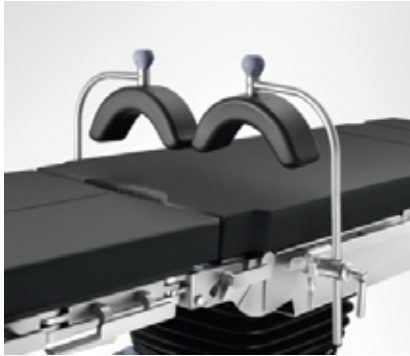
Application:

To support the legs of the patient during the surgery

Compatible with:



Leg Accessories



115-012841-00 A22XX Thigh holder, a pair

Accessory Name:

Fixation for femur, a pair, with two radial universal clamps

Application:

To support the femur of the patient during the surgery

Compatible with:



115-012843-00 A23XX Shank holder, a pair

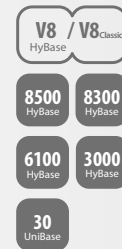
Accessory Name:

Fixation for lower leg, a pair, with two radial universal clamps

Application:

To support the lower leg of the patient during the surgery

Compatible with:



115-083146-00 A24XX Foot plate

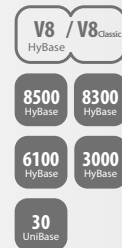
Accessory Name:

Foot support (with heavy quadrate universal clamp and pad), a pair

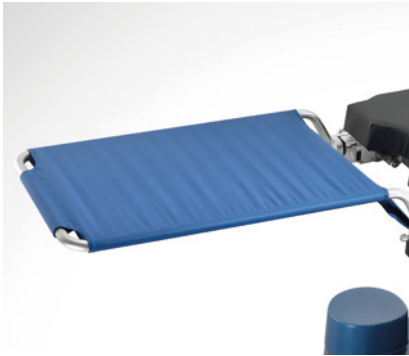
Application:

To support the foot of the patient for avoiding unexpected movement

Compatible with:



Leg Accessories



115-033425-00 803XX Transfer board

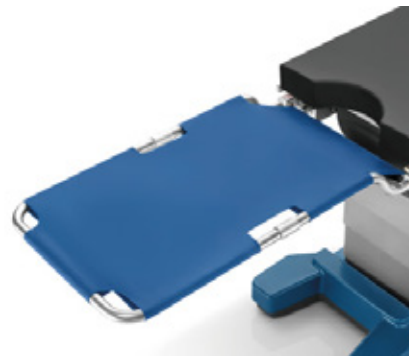
Accessory Name:

Transfer board, for HyBase 8300/8500

Application:

During surgeries, it is used to temporarily support the patient's lower extremities when positioning the patient or transferring the patient, and to optimize the pre-operation and post-operation workflows at lithotomy position

Compatible with:



115-052205-00 A03XX Transfer board

Accessory Name:

Transfer board, light plate

Application:

Support the legs temporarily during lithotomy position

Compatible with:



Leg Accessories



115-033430-00 A20XX Leg restraint cuff, thigh, a pair

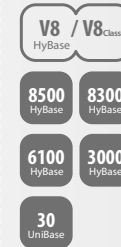
Accessory Name:

Leg restraint cuff, thigh, a pair

Application:

Used to secure the patient's thigh

Compatible with:



115-033431-00 A21XX Leg restraint cuff, shank, a pair

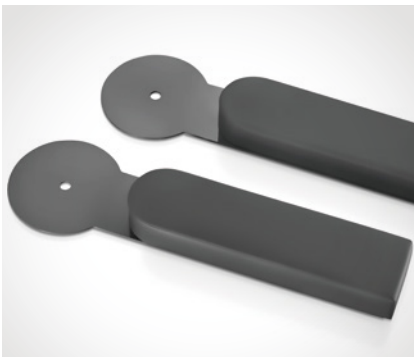
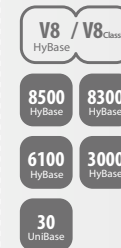
Accessory Name:

Leg restraint cuff, shank, a pair

Application:

Used to secure the patient's shank

Compatible with:



115-030153-00 A38XX Carbon fiber arm board, a pair

Accessory Name:

Carbon fiber arm board, with special foam core pad, a pair

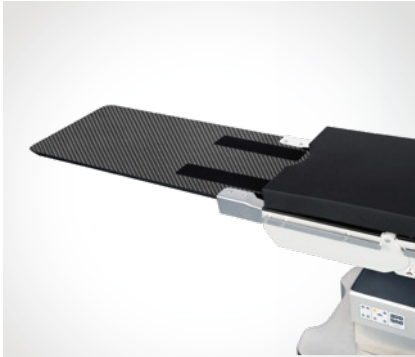
Application:

A carbon fiber arm board which includes a memorised foam pad. This can work with the 1180 cardiac operating plate which provides support for the patient's upper extremities in a supine position

Compatible with:



Back Accessories



115-084234-00 V01CX Cardiac operating plate, CF

Compatible with:

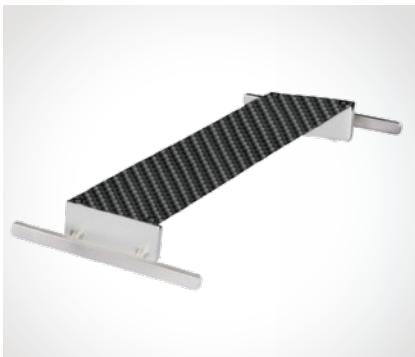


Accessory Name:

Cardiac operating plate, carbon fiber, with special foam core pad, length of 1,180mm

Application:

Cardiac operating plate, can provide 360° X-ray radiolucency, extend the foot end of the table top for 1180mm, allows for cardiovascular surgeries and spine surgeries. Includes a memorised foam pad and stand bars



115-030151-00 A81XX Accessory adaptor, CF

Compatible with:



Accessory Name:

Accessory adaptor for Cardiac Operating Plate, carbon fibre, with side rails

Application:

Provide an additional side rail for the 1180 cardiac operating plate (EU Standard), can be used to install accessories such as arm boards and shoulder supports.



115-029434-00 806XX CF cardiac operating plate

Compatible with:



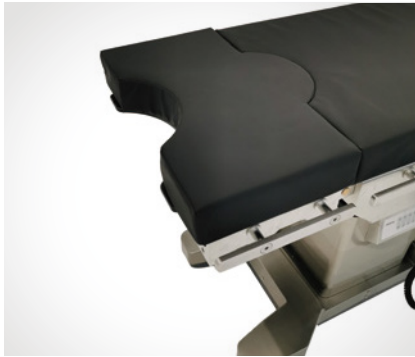
Accessory Name:

Cardiac operating plate, carbon fiber, with special foam core pad, length of 1,180mm

Application:

Cardiac operating plate, can provide 360° X-ray radiolucency, extend the foot end of the table top for 1180mm, allows for cardiovascular surgeries and spine surgeries. Includes a memorised foam pad and stand bars

Back Accessories



**115-072052-00 A06XX Extension plate,
w/ MFP, SFC**

115-072051-00 A06XP Extension plate, PU

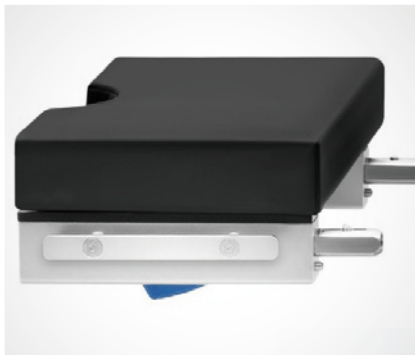
Accessory Name:

Extension plate, to extend the table top (SFC/PU)

Application:

To provide more perspective space or more standing space for doctors. Applicable to trauma, spine, gynecology, or urology

Compatible with:



115-079670-00 A67XX Extension plate

115-079671-00 A67CX Extension plate, CF

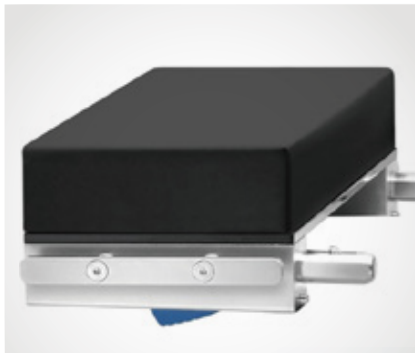
Accessory Name:

Extension plate, carbon fiber (optional), with gynaecological cutout, with special foam core pad, length of 250mm

Application:

To provide more perspective space or more standing space for doctors. Applicable to trauma, spine, gynecology, or urology

Compatible with:



115-079729-00 V03XX Upper back plate

115-079730-00 V03CX Upper back plate, CF

Accessory Name:

Upper back plate, carbon fiber (optional), with special foam core pad.
Note: The upper back plate is compulsory for the head plate

Application:

To support the back of the patient during surgeries

Compatible with:



Back Accessories



115-033428-00 802XX Short upper back plate
115-038564-00 802CX Short upper back plate, CF

Accessory Name:

Short upper back plate, with special foam core pad, for HyBase 8300/8500

Application:

During surgeries, provide support to the patient's back

Compatible with:



115-029430-00 808XX Extension plate, w/ MFP
115-029432-00 808CX Extension plate, w/ MFP, CF

Accessory Name:

Extension plate, carbon fiber (optional), with gynaecological cutout, with special foam core pad, length of 250mm

Application:

With gynaecological cutout, can extend the head end or the foot end of the operating table top up to 250mm, to provide more perspective space or more standing space for doctors. Applicable to trauma, spine, gynecology, or urology. Includes an optional memorised foam pad

Compatible with:



115-028586-00 814XX Upper back plate
115-028588-00 814CX Upper back plate, CF

Accessory Name:

Upper back plate, carbon fiber (optional), with special foam core pad
Note: The upper back plate is compulsory for the head plate

Application:

During surgeries, provides support to the patient's back

Compatible with:



Accessories for Gynecology & Urology

For Gynecology and Urology Surgery, Mindray provide a better workflow design and ergonomic working space for the patient positioning. The lightweight transfer board will help a lot after positioning the leg with less efforts to remove it. The leg plate folded design helps avoiding the disassembly of the leg plate. And the u shape design on base cover forms a larger space for surgeons while doing the operations. The cutout of the backplate also enable the patient reverse position for Gynecology and Urology Surgery.



Accessories for Gynecology & Urology



115-062765-00 A62XX Standard stirrups, a pair

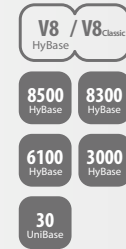
Accessory Name:

HyStirrup-III with gas spring assisted, a pair, with radial universal clamp

Application:

To support and fasten the leg of the patient

Compatible with:



115-083145-00 A29XX Heavy leg support

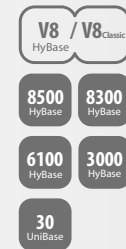
Accessory Name:

Heavy leg support (with heavy radial universal clamp, pad & fasten belt), a pair

Application:

To support and fasten the patient's leg

Compatible with:



0092-30-102647 A28XX Light leg support, a pair

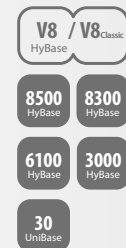
Accessory Name:

A pair of light version leg support, with heavy radial universal clamps, pads & fasten belts

Application:

To support and fasten the patient's leg

Compatible with:



Accessories for Gynecology & Urology



115-062767-00 A61XX Basic stirrups, a pair

Accessory Name:

HyStirrup-II leg support (Stirrup typ, without gas spring assisted), a pair, with heavy radial clamp

Application:

To support and fasten the patient's leg

Compatible with:

V8 / V8^{Classic}
HyBase

8500
HyBase

8300
HyBase

6100
HyBase

3000
HyBase

30
UniBase



115-007043-00 A08XX Leg holder with loops, a pair

Accessory Name:

Leg Holders. A pair with loops and radial universal clamps

Application:

To support and fasten the patient's leg

Compatible with:

V8 / V8^{Classic}
HyBase

8500
HyBase

8300
HyBase

6100
HyBase

3000
HyBase

30
UniBase



115-007049-00 A02XX Rectal positioning device

Accessory Name:

Rectal positioning device

Application:

To support the coxa and knees of the patient in rectal surgery

Compatible with:

V8 / V8^{Classic}
HyBase

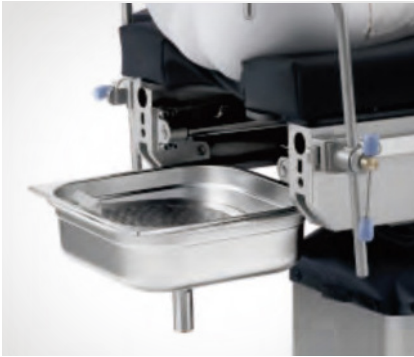
8500
HyBase

8300
HyBase

6100
HyBase

3000
HyBase

Accessories for Gynecology & Urology



115-013018-00 301XX Drainage bowl

Accessory Name:

Drainage bowl for Gynecology & Urology

Application:

To drain the liquid in lithotomy position

Compatible with:

3000
HyBase



115-034318-00 A25XX Drainage bowl, universal

Accessory Name:

Universal drainage bowl

1. To be fixed on the table side rail, suitable for all table models
2. With a radial clamp

Application:

To drain the liquid in lithotomy position

Compatible with:

V8 / V8 Classic
HyBase

8500
HyBase

8300
HyBase

6100
HyBase

3000
HyBase

30
UniBase



**115-005697-00 A70XX Drainage bowl,
HyBase 6100**

Accessory Name:

Drainage bowl for Gynecology & Urology

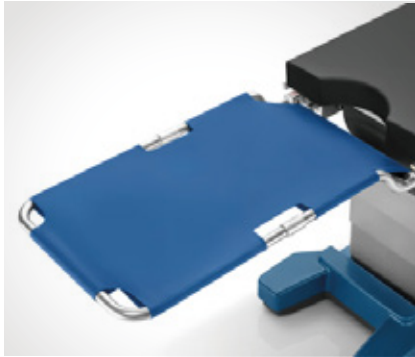
Application:

To drain the liquid in lithotomy position

Compatible with:

6100
HyBase

Accessories for Gynecology & Urology



115-052205-00 A03XX Transfer board

Accessory Name:

Transfer board, light leg plate

Application:

During surgeries, it is used to temporarily support the patient's lower extremities when positioning the patient or transferring the patient, and to optimize the pre-operation and post-operation workflows at lithotomy position

Compatible with:



115-033425-00 803XX Transfer board

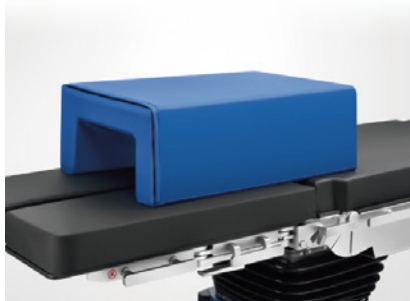
Accessory Name:

Transfer board, for HyBase 8300/8500

Application:

During surgeries, it is used to temporarily support the patient's lower extremities when positioning the patient or transferring the patient, and to optimize the pre-operation and post-operation workflows at lithotomy position

Compatible with:



115-047824-00 P22XX Lateral positioner

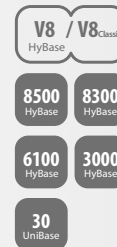
Accessory Name:

Lateral positioner for the leg

Application:

Support the legs during lateral position

Compatible with:



Accessories for Gynecology & Urology



115-075117-00 A58XX Stirrup cart

Accessory Name:

Stirrup cart, a cart to place the stirrup

Application:

To store the stirrup

Compatible with:

V8 / V8^{Classic}
HyBase

8500
HyBase

8300
HyBase

6100
HyBase

3000
HyBase

30
UniBase



115-030812-00 A07XX Hand grips with clamps, a pair

Accessory Name:

Hand grips with two light quadrate clamps, a pair

Application:

They can provide something for the woman giving birth to hold onto during or after the pushing phase on the delivery bed

Compatible with:

V8 / V8^{Classic}
HyBase

8500
HyBase

8300
HyBase

6100
HyBase

3000
HyBase

30
UniBase

Orthopedic Accessories



Orthopedics Extension



Tibia Extension Assembly



Lateral Femoral Extension Assembly

Orthopedic Accessories



115-029436-00 HyExtent-CF w/ cart,basic
115-066779-00 HyExtent-CF w/ cart,comfort

Accessory Name:

Orthopedic extension device, comfort version(optional), carbon fiber, including the cart Note: Comparing with 115-029436-00, the confort version adopts more ergonomic traction boots

Application:

During the orthopedic traction surgery, it is used to pull the femur to meet the need of x-rays; the device is made of highly-transmissible carbon ber materials to improve image qualities.

Compatible with:



115-033409-00 HyExtent-IV w/ cart, basic
115-066781-00 HyExtent-IV w/ cart,comfort

Accessory Name:

Orthopedic extension device, hook version, stainless steel, including the cart Orthopedic extension, comfort version with hook connection, stainless steel, including the cart Note: Comparing with 115-033409-00, the confort version adopts more ergonomic traction boots

Application:

To provide leg traction during orthopedic surgery

Compatible with:



115-009425-00 HyExtent-III w/ cart,basic
115-066777-00 HyExtent-III w/ cart,comfort

Accessory Name:

Orthopedic extension, comfort version(optional), including the cart Note: Comparing with 115-009425-00, the confort version adopts more ergonomic traction boots

Application:

To provide leg traction during orthopedic surgery

Compatible with:



Orthopedic Accessories



115-079686-00 Ortho extension w/ cart,V, comfort

Compatible with:

Accessory Name:

Ortho extension device, comfort version, including the cart



Application:

To provide leg traction during or thopedic surgeries



115-005780-00 Ortho extension device cart, type III

Compatible with:

Accessory Name:

Ortho extension device cart



Application:

To store the Ortho extension device



115-007057-00 A80XX Lateral femur extension assembly

Compatible with:

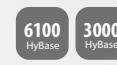
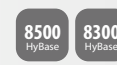
Accessory Name:

Lateral femur extension assembly
Note: need to use with ortho extension



Application:

To provide femur traction in lateral position



Orthopedic Accessories



115-033410-00 HyExtent-Uni w/ cart,basic
115-066775-00 HyExtent-Uni w/ cart,comfort

Accessory Name:

Orthopedic extension, comfort version (optional), for UniBase 30, including the cart

Note: Comparing with 115-033410-00, the comfort version adopts more ergonomic traction boots

Application:

To provide leg traction during orthopedic surgery

Compatible with:

30
UniBase



115-007055-00 A77XX Tibia & fibula extension assembly

Accessory Name:

Tibia & fibula extension assembly

Note: need to use with ortho extension

Application:

To provide tibial and fibula traction

Compatible with:

V8 / V8^{Classic}
HyBase

8500
HyBase

8300
HyBase

6100
HyBase

3000
HyBase

30
UniBase

Orthopedic Accessories



- 115-047827-00 A72XX Leg holder for Ortho ext. device
- 115-047828-00 820XX Leg holder for HyExtent-CF

Accessory Name:

Leg holder for stainless steel orthopedic extension device
 Leg holder for carbon fiber orthopedic extension device

Application:

Support the injured leg during the orthopedic operation

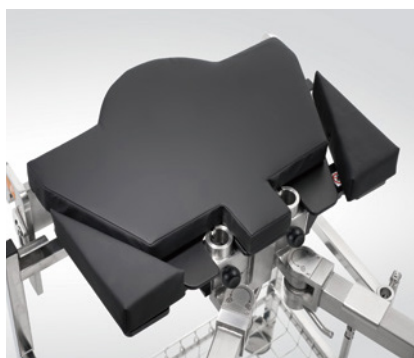
Compatible with:

A72XX:

- V8 / V8^{classic} HyBase
- 8500 HyBase
- 8300 HyBase
- 6100 HyBase
- 3000 HyBase
- 30 UniBase

820XX:

- 8500 HyBase
- 8300 HyBase



- 115-011817-00 A79XX Pelvis width extender, a pair

Accessory Name:

Triangle support board, 2 pieces

Application:

It is used to widen the pelvis plate

Compatible with:

- V8 / V8^{classic} HyBase
- 8500 HyBase
- 8300 HyBase
- 6100 HyBase
- 3000 HyBase
- 30 UniBase



- 115-033422-00 A56XX Upper arm extension device

Accessory Name:

Upper arm extension device with a heavy radial clamp

Application:

During surgeries, it is used to fix and pull patient's forearms; consists of auxillary pillar, elbow joint pillar, palm & finger fixer and tractor

Compatible with:

- V8 / V8^{classic} HyBase
- 8500 HyBase
- 8300 HyBase
- 6100 HyBase
- 3000 HyBase
- 30 UniBase

Orthopedic Accessories



115-079669-00 A66XX Back plate for shoulder operation

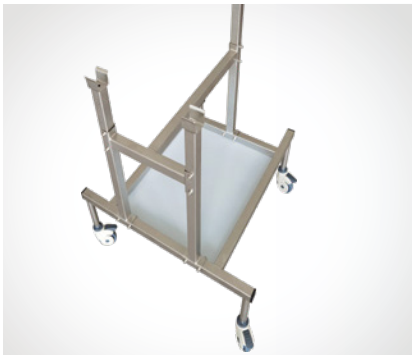
Accessory Name:

Back plate for shoulder operation, with helmet

Application:

To support the head and back of the patient providing a stable support for Shoulder operation

Compatible with:



115-081869-00 A05XX Shoulder chair dolly

Accessory Name:

Shoulder chair dolly, a dolly to place the back plate for shoulder operation

Application:

To place the back plate for shoulder operation (115-081868-00)

Compatible with:



115-081868-00 A04XX Back plate for shoulder operation

Not applicable for European and Australian markets

Accessory Name:

Back plate for shoulder operation

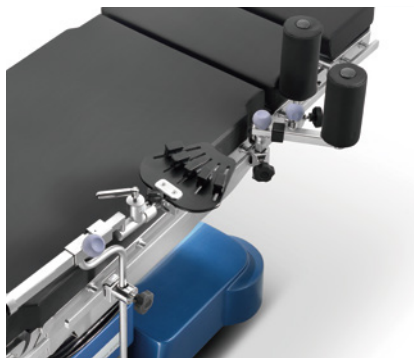
Application:

To support the head and back of the patient providing a stable support for shoulder operation

Compatible with:



Orthopedic Accessories



115-033421-00 A55XX Forearm extension device

Accessory Name:

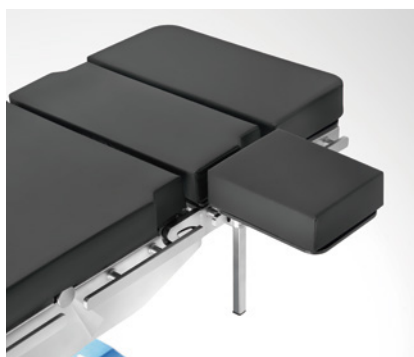
Forearm extension device with clamps

Note: recommend to use with side rail extension (HySRE-2)

Application:

During surgeries, it is used to fix and pull patient's forearms; consists of auxillary pillar, elbow joint pillar, palm & finger fixer and tractor

Compatible with:



115-033415-00 A39XX Upper arm support

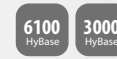
Accessory Name:

Upper arm support with a heavy quadrate clamp

Application:

To support the upper arm of the patient

Compatible with:



115-007047-00 A40XX Arm operating table

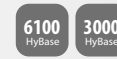
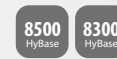
Accessory Name:

Arm operating table

Application:

To support the arm of the patient and the hand of the surgeon

Compatible with:



Orthopedic Accessories



- 115-052229-00 807XX Back plate for shoulder operation**
115-059315-00 A71XX Body strap for shoulder operation

Accessory Name:

Demountable shoulder support module with helmet to support patient's head
Body strap(optional) used with back plate for shoulder operation

Application:

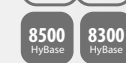
Provide a stable support for the shoulder operation by beach-chair position

Compatible with:

807XX



A71XX



- 115-033413-00 A26XX Arthroscopic leg holder**

Accessory Name:

Arthroscopic leg holder with a heavy radial clamp

Application:

To fasten and support the knee of the patient

Compatible with:



- 115-033416-00 A27XX Meniscus positioning device**

Accessory Name:

Meniscus positioning device with clamp

Application:

To provide support for patient's thigh or foot during knee joint surgeries

Compatible with:



Accessories for Controlling and Easier Application



115-028600-00 818XX Wireless hand control,LCD,w/ shift
115-028598-00 817XX IR hand contro,LCD

Compatible with:



Accessory Name:

IR hand control, with LCD, with/without longitudinal slide function, with wireless charger

Application:

Can adjust and control movements of the operating table through the infrared remote control system; with LCD. Wireless charging and easy to clean



115-028596-00 816XX Corded hand control,LCD,w/ shift
115-028594-00 815XX Corded hand control,LCD

Compatible with:



Accessory Name:

Corded hand control, with LCD, with/without longitudinal shift function

Application:

Adjust and control movements of the operating table; with LCD



DJ15-0022-016 V08XX Corded hand control

Compatible with:



Accessory Name:

Corded hand control

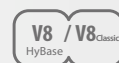
Application:

Adjust and control movements of the operating table; with LCD



DJ15-0022-015 V07XX Wireless hand control

Compatible with:



Accessory Name:

Wireless hand control

Application:

Adjust and control movements of the operating table; with LCD

Accessories for Controlling and Easier Application



115-079752-00 V04XX Foot switch

Accessory Name:

Foot switch

Application:

To control the table movement.

Compatible with:



0092-30-102644 A59XX Foot switch

Accessory Name:

Foot switch

Application:

To control the table movement

Compatible with:



115-008220-00 A01XX Accessory cart

Accessory Name:

Accessory cart

Application:

To place general accessories for the operating table

Compatible with:



115-079748-00 V05XX Assist drive handle

Accessory Name:

Assist drive handle

Application:

To assist in controlling and moving the operating table

Compatible with:



Comfort Solution Accessories



- 115-005872-00 P34LX Head ring 20×7×7
- 115-005873-00 P34MX Head ring 20×7×5
- 115-005877-00 P34SX Head ring 20×7×3
- 115-005874-00 P09LX Paediatric head ring 14×5×3
- 115-005878-00 P09MX Paediatric head ring 14×7×2.5
- 115-005875-00 P09SX Paediatric head ring 10×4×2.5
- 115-005876-00 P32XX Infant head ring 8×3×2



- 115-005885-00 P16LX Horseshoe head ring 20×7×7
- 115-005886-00 P16MX Horseshoe head ring 20×7×5
- 115-005890-00 P16SX Horseshoe head ring 20×7×3
- 115-005887-00 P07LX Paediatric horseshoe head ring 14×5×3
- 115-005888-00 P07SX Paediatric horseshoe head ring 10×4×2.5
- 115-005889-00 P31XX Infant head ring 8×3×2



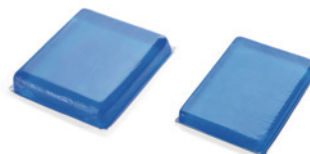
- 115-005896-00 P29LX Ophthalmic head pad 23×23×4
- 115-005897-00 P29MX Ophthalmic head pad 22×19×6
- 115-038076-00 P29LX Ophthalmic pad, paediatric 15×15×3.5
- 115-005898-00 P30XX Pillow for supine position 24×22×7



- 115-005864-00 P06XX Prone position pillow 28×24×14
- 115-005830-00 P11XX Prone position pillow 25×20×10
- 115-038074-00 P19XX Prone pillow, full support 23×20×11
- 115-038075-00 P08XX Paediatric prone pillow 21×18×11

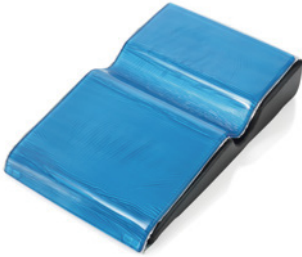


- 115-005892-00 P25XX Universal supine pad 18×18×8

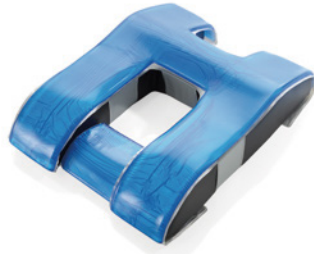


- 115-005900-00 P26LX Universal Head Pad 25×23×6
- 115-005832-00 P26SX Universal Head Pad 25×18×3

Comfort Solution Accessories



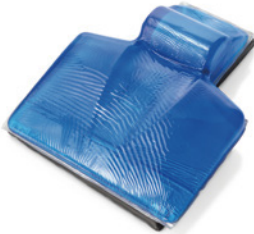
· 115-005910-00 P05XX Lateral positioner
72×46×15



· 115-005788-00 P10XX Pad for intervertebral
disc 63×46×15



· 115-038080-00 P33XX Prone position pad,
hard inner 60×49×18



· 115-038077-00 P15XX Struma pad
48×39×9



· 115-005803-00 P35LX Short gel body roll
30×15×7
· 115-005807-00 P35MX Short gel body
roll 30×10×7
· 115-005804-00 P35SX Short gel body roll
30×10×4
· 115-038079-00 P04XX Gel body roll,
paediatric 20×10×7



· 115-005805-00 P17LX Long gel body
roll 50×15×7
· 115-005808-00 P17MX Long gel body
roll 50×10×7
· 115-005806-00 P17SX Long gel body
roll 50×10×4

Comfort Solution Accessories



- 115-005796-00 P23XX Body strap 60×7×1
- 115-083121-00 P18XX Elbow protection strap 40×15×1.5, a pair
- 115-083122-00 P13XX Ankle protection strap 45×7×1, a pair
- 115-005908-00 P27XX Wrist protector 25×5×1



- 115-005790-00 P28XX Chest-hipbone pad 50×20×7



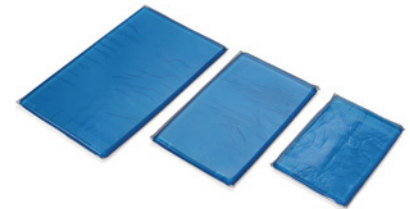
- 115-005794-00 P14XX Pad for countertraction post 27×20×1.5



- 115-083144-00 P20LX Universal arm board pad 60×16×1, a pair
- 115-083143-00 P20SX Universal arm board pad 40×16×1, a pair



- 115-005811-00 P03LX Arm/leg pad 50×15×4
- 115-005812-00 P03SX Arm/leg pad 40×15×4



- 115-005820-00 P24LX Universal square pad 50×30×1.5
- 115-005819-00 P24MX Universal square pad 40×24×1.5
- 115-005818-00 P24SX Universal square pad 30×20×1.5

Comfort Solution Accessories



· 115-083123-00 P12XX Heel pad
18×10×7, a pair



· 115-038078-00 P01XX Universal hip pad
50×40×1.5



· 115-005826-00 P21XX Table pads, 3 pieces
Head: 23×50×1.5
Torso: 100×50×1.5
Lower limb: 50×50×1.5



· 115-047824-00 P22XX Lateral
positioner
Lateral positioner for the leg,
64×40×22





TECNOIMAGEN
www.tecnoimagen.com.ar | 0810 333 8273

mindray
healthcare within reach