

**mindray**

# HyPixel™ R1

**4K** NIR Endoscope Camera System

Better Visibility  
Greater Precision





Is there a way to locate the clinical target volume in real time, and navigate the operation through minimally invasive surgery?

The HyPixel™ R1 4K NIR endoscope camera system can provide real-time fluorescence images of the anatomy structure, enabling surgeons to perform operations with greater confidence.

## Greater Precision

### **FluoDirect™ Technology / See Exactly What You Need**

FluoDirect™ technology provides real-time overlapped fluorescence images for intraoperative marking and navigation, without changing the regular view of surgery. The technology also delivers a highly sensitive fluorescence signal recognition, which indicates clear boundaries between white light images and fluorescence images.



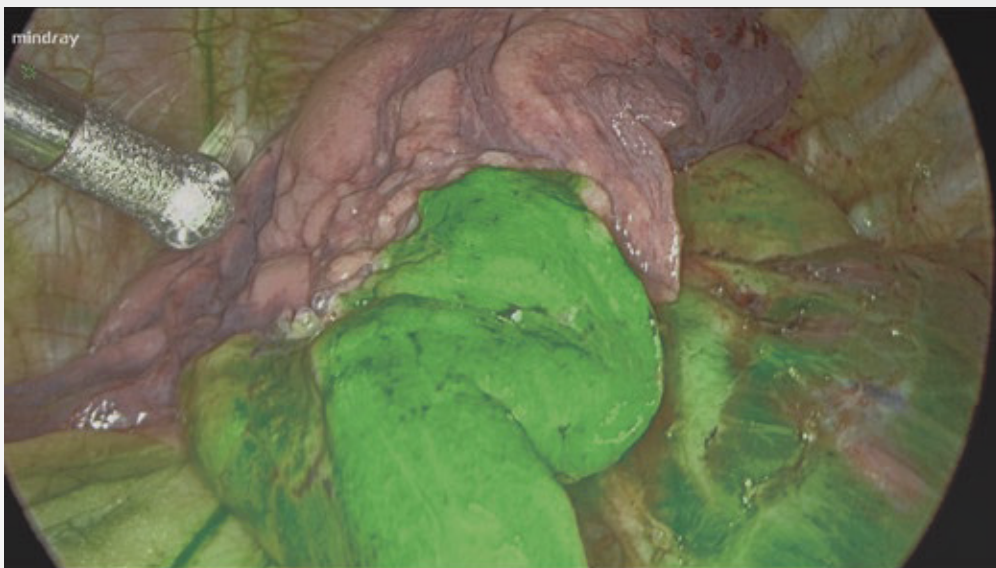
Navigate the operation smoothly via clearer visualization of organs and lesions.



Avoid excessive lymph node dissection via sentinel lymph node mapping.



Reduce occurrences of anastomotic leakage based on gastrointestinal perfusion evaluation.



Pulmonary intersegmental plane identification

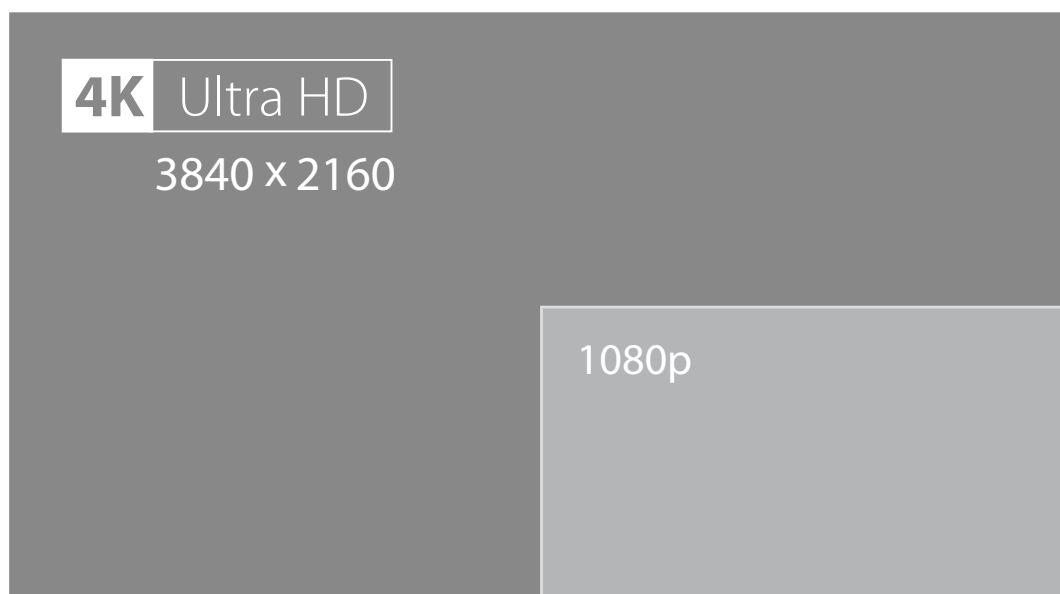


Mark sentinel lymph node for endometrial cancer.

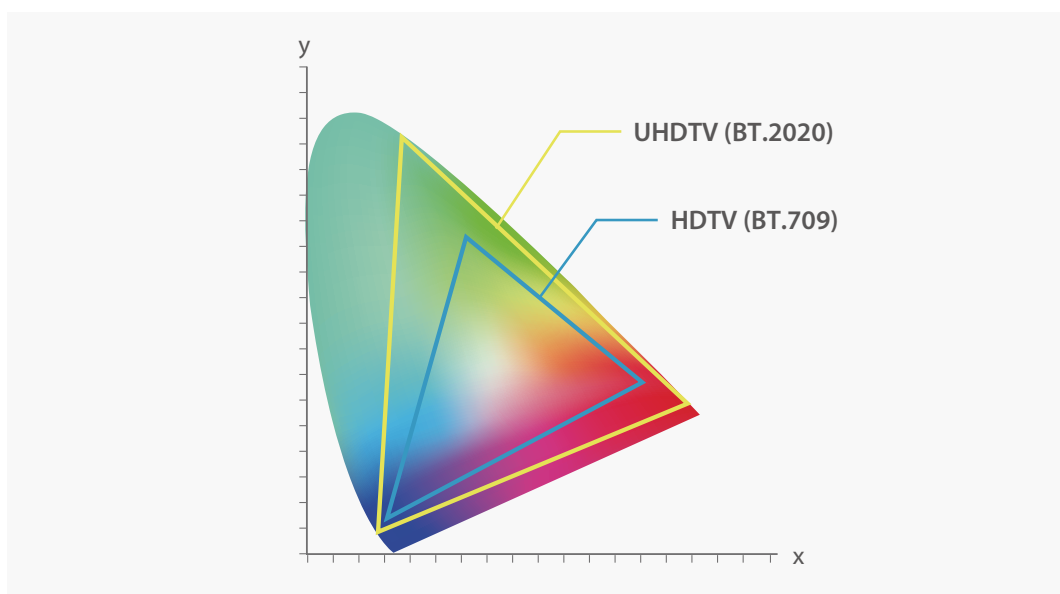
# Better Visibility

## Wider Color Gamut with 4K Resolution

3840 x 2160-pixel ultra HD graphics output displays richer detail of tissue textures, allowing for greater accuracy in discerning tumor tissues.



WCG has a wider spectrum of colors for more realistic images which help give a clearer picture of adjacent tissues.



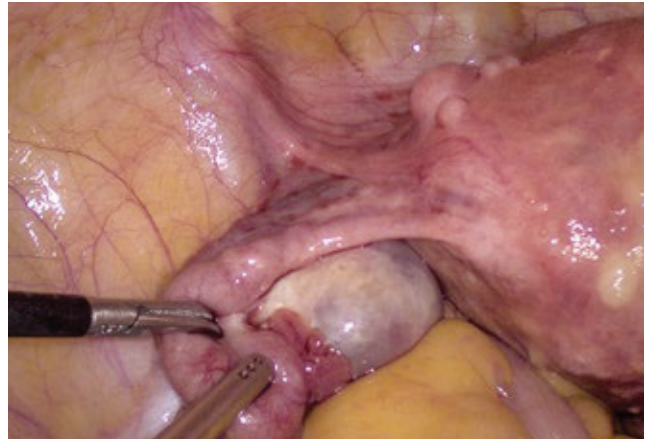


## Closer to Reality thanks to Intelligent Algorithms

Automatic brightness adjustment allows for high-quality images with optimum levels of brightness.

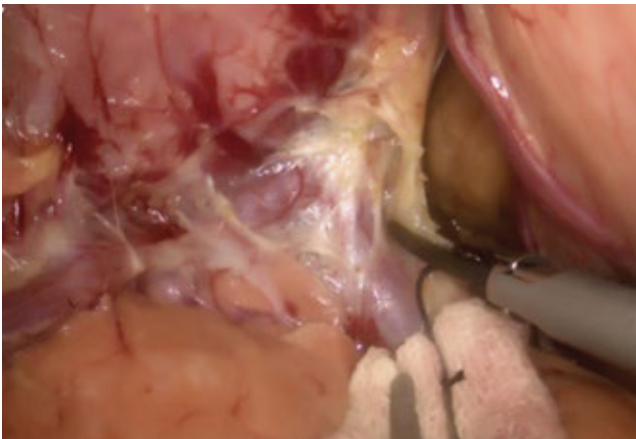


Before

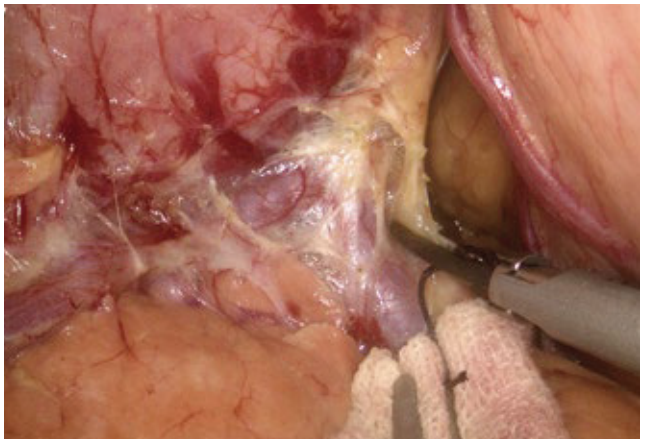


After

Optimized image processing allows the system to show better anatomy detail, enabling surgeons to perform surgery with greater accuracy.



Before



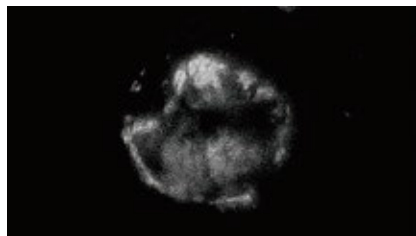
After

# Easy-to-Use

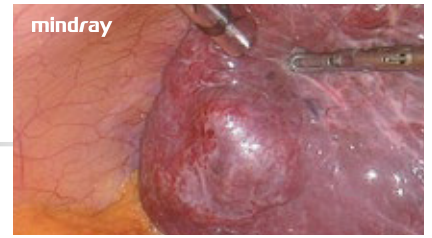
Switch multiple imaging modes with one click



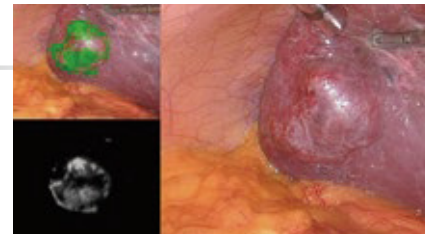
Overlapped mode



Mono mode



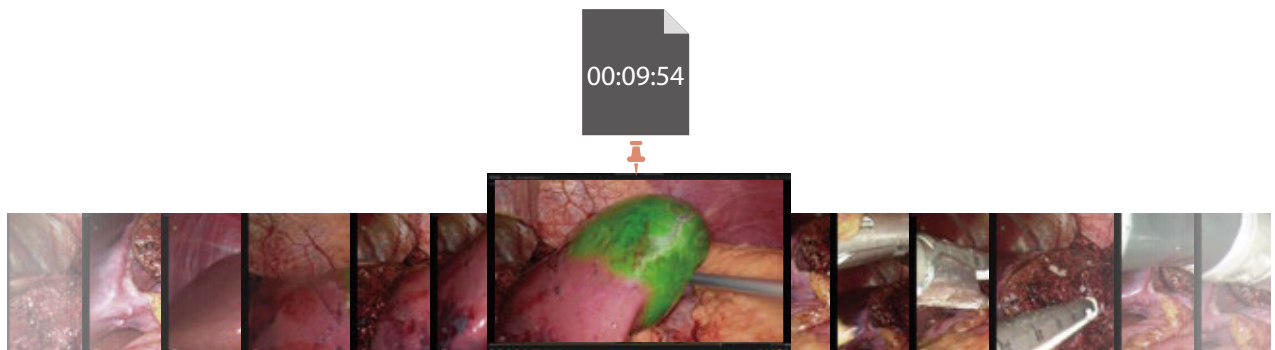
White light mode



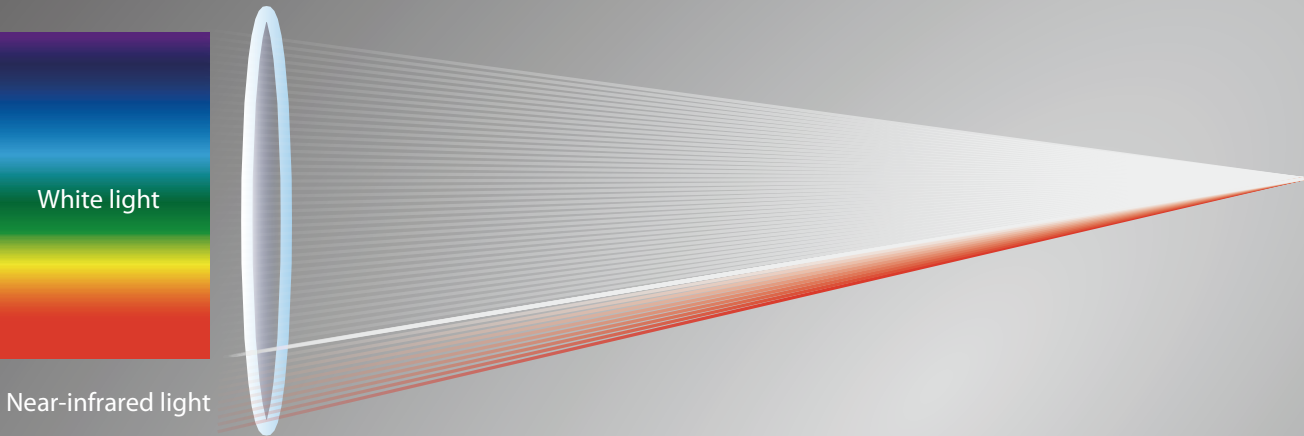
Triple split mode

## Built-in USB recording with bookmark

Video recording and screenshot function can work simultaneously, while the bookmark function makes video editing easier.



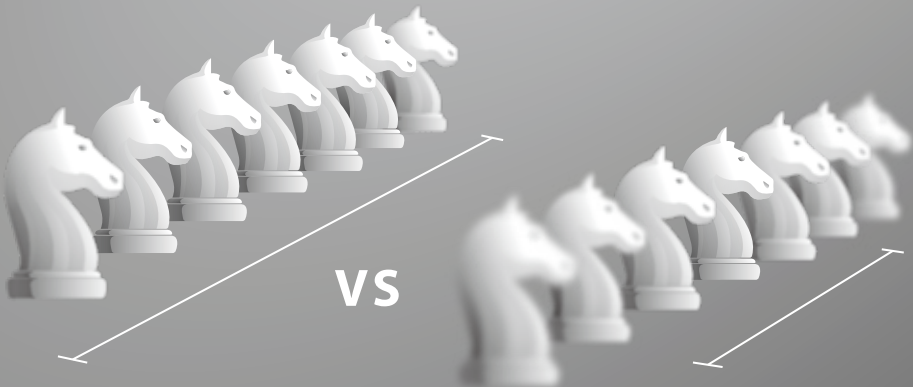
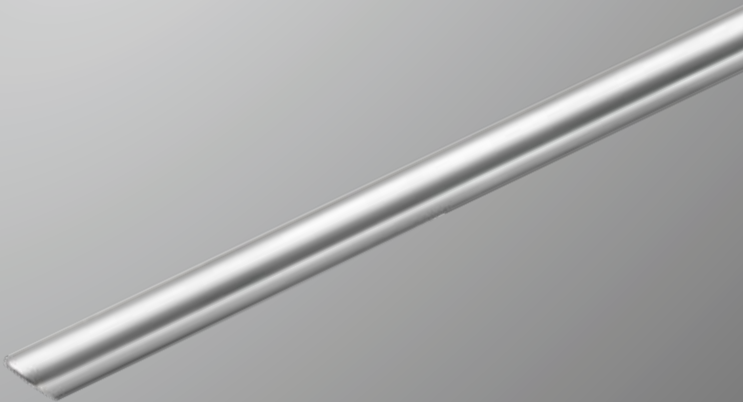
# Fog-resistant rigid endoscope with large depth of field



Independent dual-optical path design enables greater compatibility with white light systems.

Unique lens surface can effectively handle fog issues.

Within the large depth of field range (3-200mm), R1 always provides clear vision from far to near.





**TECNOIMAGEN**  
[www.tecnoimagen.com.ar](http://www.tecnoimagen.com.ar) | 11-4582-2222

**mindray**  
healthcare within reach