

DIAGNOSTIC ULTRASOUND
FOR THE EQUINE VETERINARIAN.

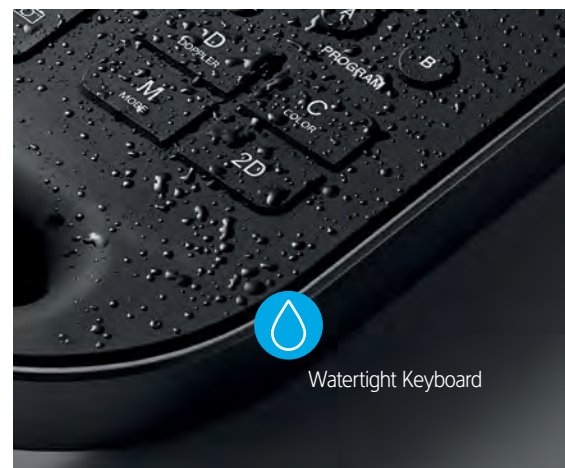


NEW EDGE II FEATURES INCLUDE:

- A** New and improved transducer technology includes optimization of the L52x rectal transducer, including faster frame rates and improved image resolution, with Steep Needle Profiling
- B** Armored Cable transducer technology
- C** TCP/IP, USB: Direct writing capability to USB 2.0
New Auto-Export allows for easy, automatic image transfer at exam close.
- D** Gain control dials
- E** DirectClear Technology
- F** Anti-reflective glass screen

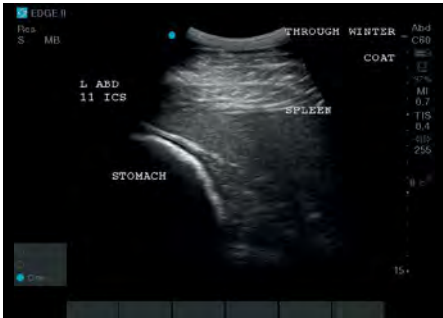


Edge II Vet has been redesigned to meet the challenges of the veterinary work environment, more importantly, equine. Now coupled with a new sealed keyboard and Armored Cable transducers, the Edge II Vet ultrasound is built to withstand your most challenging work day.

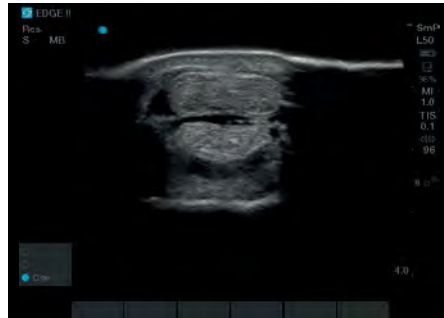


Watertight Keyboard

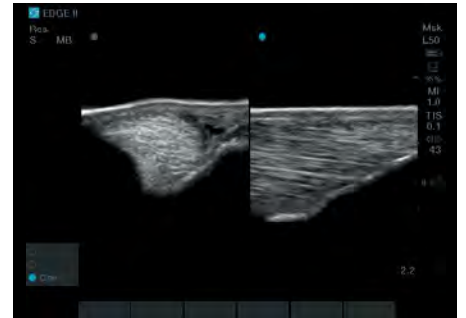
SonoSite Edge II Vet



C60xi – Stomach



HFL50x – Pastern Short Axis



HFL50x – Suspensory Branch, Short Axis,
Long Axis

VISUALIZATION, CLEARLY ENHANCED.

DirectClear Technology combines several new design features for significant performance improvement. Compared to the previous generation of transducers, tests have shown an increase of up to 30% in penetration and resolution with these new additions. DirectClear Technology is available on several transducers across the SonoSite ultrasound portfolio.



SONOSITE EDGE II VET TRANSDUCERS

SonoSite designs, manufactures and tests transducers in-house with real-world customer needs in mind. Our transducers exceed stringent military specifications for drop testing built to withstand the knocks and scrapes inevitable in any busy veterinary practice. SonoSite has software engineered the new improved L52x rectal probe to produce a faster frame rate and improved image resolution.



L52x ●
10-5 MHz Linear



HFL50x ●
15-6 MHz Linear



HFL38xi ● ●
13-6 MHz Linear



L25x ● ● ●
13-6 MHz Linear



C11x ●
8-5 MHz Curved



rC60xi ● ● ●
5-2 MHz Curved



rP19x ● ●
5-1 MHz Phased



C35x ●
8-3 MHz Curved

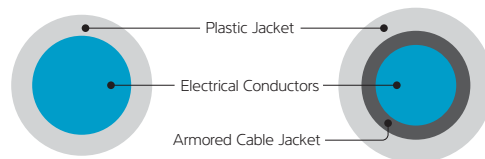
- DirectClear Technology.
- Optional Armored Cable.
- Needle guides and kits available.
- A transverse needle guide available.

ARMORED CABLES

Astonishing durability as never seen before. SonoSite Edge II Vet ultrasound leads again with transducer cables able to withstand your work hazards. Engineered to protect against being stepped on, rolled on or even twisted, your investment is protected. Currently available on the majority of our veterinary transducers.



Standard Cable Armored Cable



Armored Cable

TECNOIMAGEN

www.tecnoimagen.com.ar | 11-4582-2222