

Easy Use with Effortless Portability



Magnetic charging and an optional all-day battery solution



Wide tilting angle to accommodate users of different heights



Fully sealed control panel for easy cleaning and disinfection

Light weight design for great mobility



HD screen for clear image viewing



Finger swipe to adjust parameters for efficient use



Multiple trolley configurations to meet different requirements

Multiple probe ports designed for efficient workflow

MX5

Compact Ultrasound System

Quality Care, Smart Access



Making Quality and Smart Diagnosis Accessible

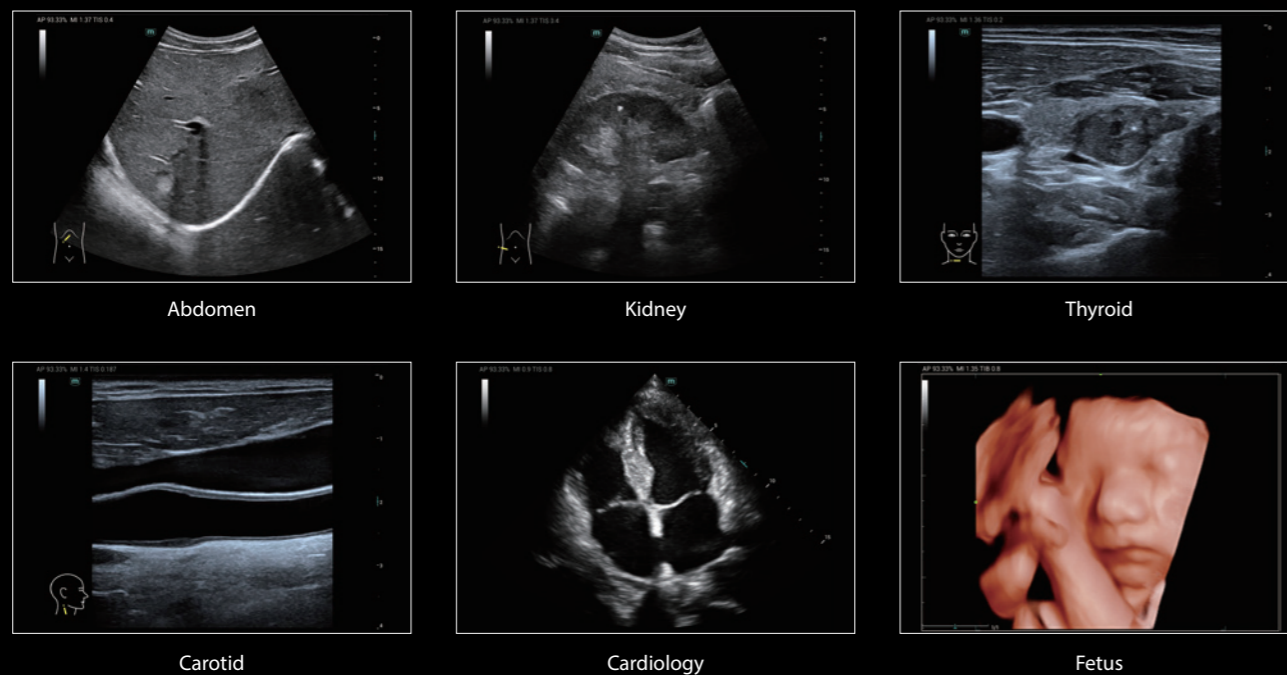
With advancements in medical imaging technology and evolving clinical needs, ultrasound is now used in diverse applications and scenarios.

Driven by the mission of "Advance medical technologies to make healthcare more accessible," Mindray introduces the new compact ultrasound system MX5. Focusing on quality imaging, smart solutions, and ultimate portability, it provides healthcare providers with a smart, user-friendly, and reliable ultrasound solution, aiming to make quality imaging and effective diagnosis easily accessible.



Precise Diagnosis

Powered by the premium ZST+ platform, the MX5 utilizes innovative image processing algorithms and cutting-edge probe technology to deliver clearer images in less scanning time, making doctors provide precise diagnoses.



Confident in Diverse Applications

MX5 offers dedicated intelligent solutions for various clinical applications. With its smart and advanced functions, it reduces doctors' operational complexity while improving diagnostic efficiency and accuracy, making high-quality care smart and confidently accessible.

The image shows the Mindray MX5 ultrasound system with four application-specific icons and their corresponding features:

- Abdomen and Small Parts:**
 - Smart Calc: Measurement and calculation tool
 - Smart HRI: Easy evaluation of liver steatosis
- Musculoskeletal:**
 - CPP: Auto-calculation of color pixel percentage
 - iNeedle: Needle enhancement for procedures
- Cardiovascular:**
 - AutoEF: Fast systolic function assessment tool
 - RIMT: Accurate evaluation of intima-media thickness
- Obstetrics:**
 - Smart Face: Easily acquiring great fetal images
 - Smart OB: Auto-measurement of key parameters on OB exams

Improved Imaging Capability

In addition to intelligent clinical application solutions, the MX5 provides smart imaging IT solutions. It supports doctors in enhancing their professional skills and expanding their imaging services, empowering them to improve their imaging capabilities effectively.

The image shows the MX5 ultrasound system at the center of a circular diagram, surrounded by four IT solution boxes:

- Built-in learning functions on MX5:** A doctor is shown using the MX5 system.
- Comprehensive image share solutions:** Two doctors are shown reviewing images on a laptop.
- MiCo+ App for more learning resources:** A hand is shown holding a smartphone displaying the MiCo+ app interface.
- Remote collaboration and training on MiCo+:** A doctor is shown using the MX5 system while another doctor is shown on a laptop, indicating remote collaboration.