

dCT-VET600

 Veterinary CBCT 



Low investment / Easy interper

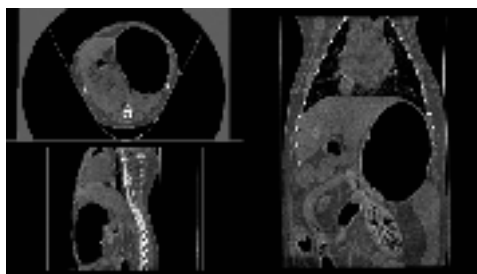


Multiple functions

Three imaging modes:

CT / Dynamic DR / Static DR

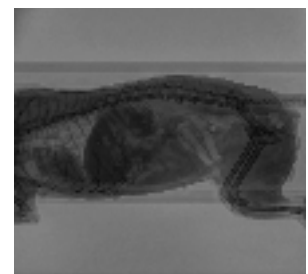
Designed to meet the needs of X-ray diagnosis in pet hospitals



CT



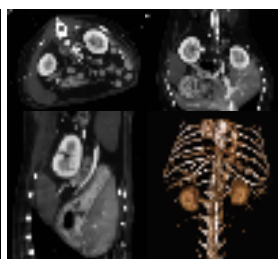
DR



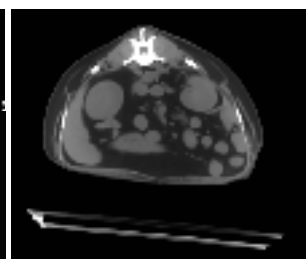
Dynamic DR



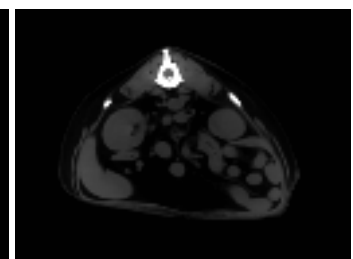
Nasal cavity



Contrast enhancement scan of dog

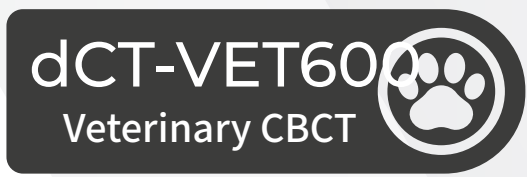


Before table removal



After table removal

Interpretation / Quick recovery



Excellent performance

- 0.139mm ultra-thin slice thickness
- 4.5s scanning speed
- Equipped with one click table removal function
- 600 slices of images per rotation
- 512mm*512mm/768mm*768mm reconstruction matrix

Quick installation

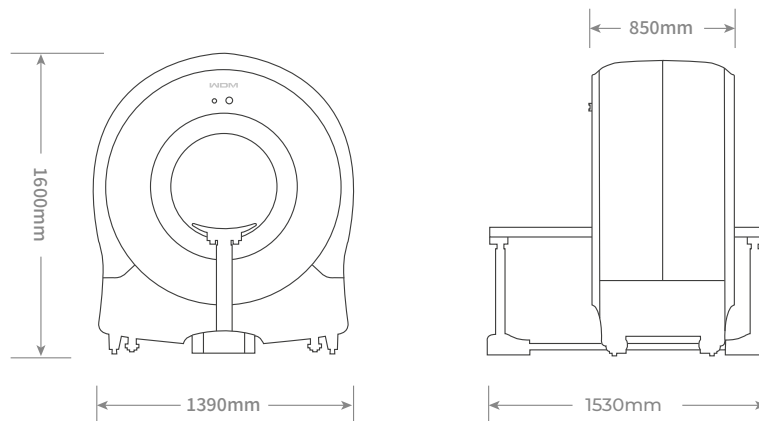
- Compact and movable design
- Fast installation and debugging

Parameters

Detector Pixel Size	3072*3072
Thinnest Slice Thickness	0.139mm
Tube Voltage	125kV
Tube Current	100mA
Aperture Diameter	560mm
Fastest Scanning Speed	4.5s
Number of Image Layers	600 slices

Default Reconstruction Pixels	0.299mm
Radiation Dose	1% VS Spiral CT
Power Supply Type	220V
Overall Dimensions	1.6m*1.39m*1.53m
Total Weight	365kg
Appearance Design	Integrated
Mobility	Yes

Specifications





WDM

TECNOIMAGEN

www.tecnoimagen.com.ar | 11-4582-2222