

TurboTom 1S VET

Veterinary Computed Tomography X-ray System



High Performance Achieves High Definition Imaging

The TurboTom 1S-VET utilizes liquid metal bearing tubes with high heat dissipation, delivering ample power for consistent scanning. With the Ultra Low Noise Detector and the Image-Clarity superposition iteration denoising algorithm, it achieves a balance between low dosage and high-definition images, facilitating accurate clinical diagnoses. Furthermore, the intelligent imaging platform enables doctors to easy operation and perform precise analyses.



**4MHU Liquid
Metal Bearing Tube**
High heat dissipation
low system wearing out

0.5s/360°
Fast scanning
fast reconstruction

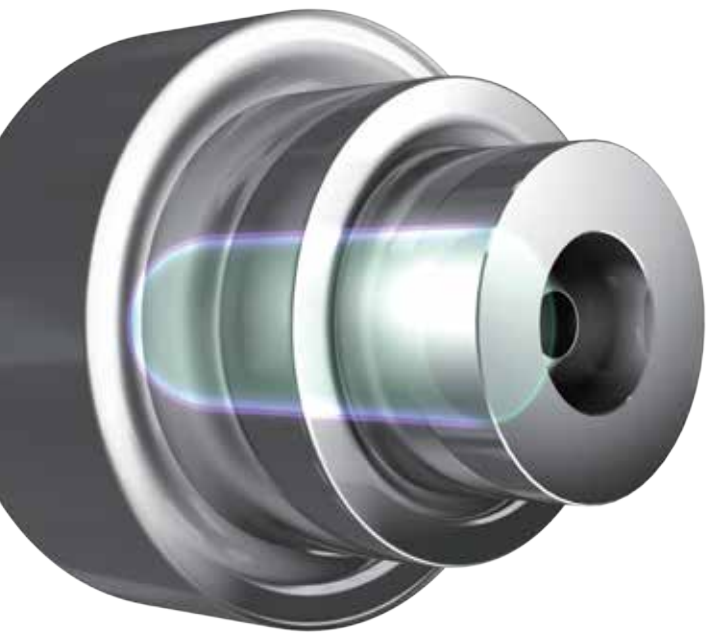


**0.5mm Thin-layer Scanning
Million Pixels Imaging**

High resolution
high definition

**All-round Low Dose
Technology**

Low noise
low dose



Liquid metal Bearing

Stable performance, meeting continuous and large examination through put.

Low System Wearing out



When the anode rotates, the liquid metal-bearing rotates almost without friction, resulting in less vibration, noise and heat and low system wearing out, and thus extending the service life of the tube.

High Heat Dissipation Rate



Liquid metal bearings can tightly fill the gaps between the rotor and bearing, increase the heat conduction area, achieve all-round heat exchanging, so that to ensure continuous scanning needs.

High Efficiency



No need for start-up time, shortening the overall scanning time of the patient and making the examination efficient.

Low noise



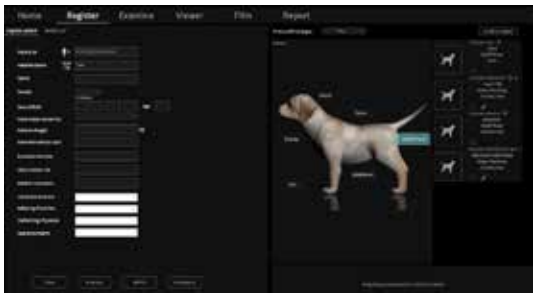
The rotor and bearings soaked by liquid metal produce low vibration and smooth rotation when working, reducing the noise of the system, and giving patient a quiet examination environment.

Exclusive, Efficient, and Versatile

Exclusive multi - task parallel system, rich image processing tools

Exclusive Efficient Animal Scanning System

Human-centered design, animal-specific protocols, multi-language interface.



Multi - Task Parallel Processing Technology

Registration, scanning, reconstruction, post-processing, and archiving run simultaneously on independent threads, enhancing overall efficiency by up to 300%.



Intelligent Dual Workflow System

The TurboTom 1S VET enables registration and parameter setting during patient positioning. Single-operator workflow allows simultaneous monitoring and scan preparation, improving efficiency and reducing anesthesia risk.



VR Volume Reconstruction

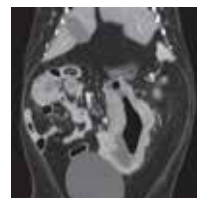
After contrast-enhanced scanning, the VR function provides clear visualization of abdominal tumors and their spatial relationship with surrounding organs.



Axial Abdomen



Sagittal Abdomen



Coronal Abdomen



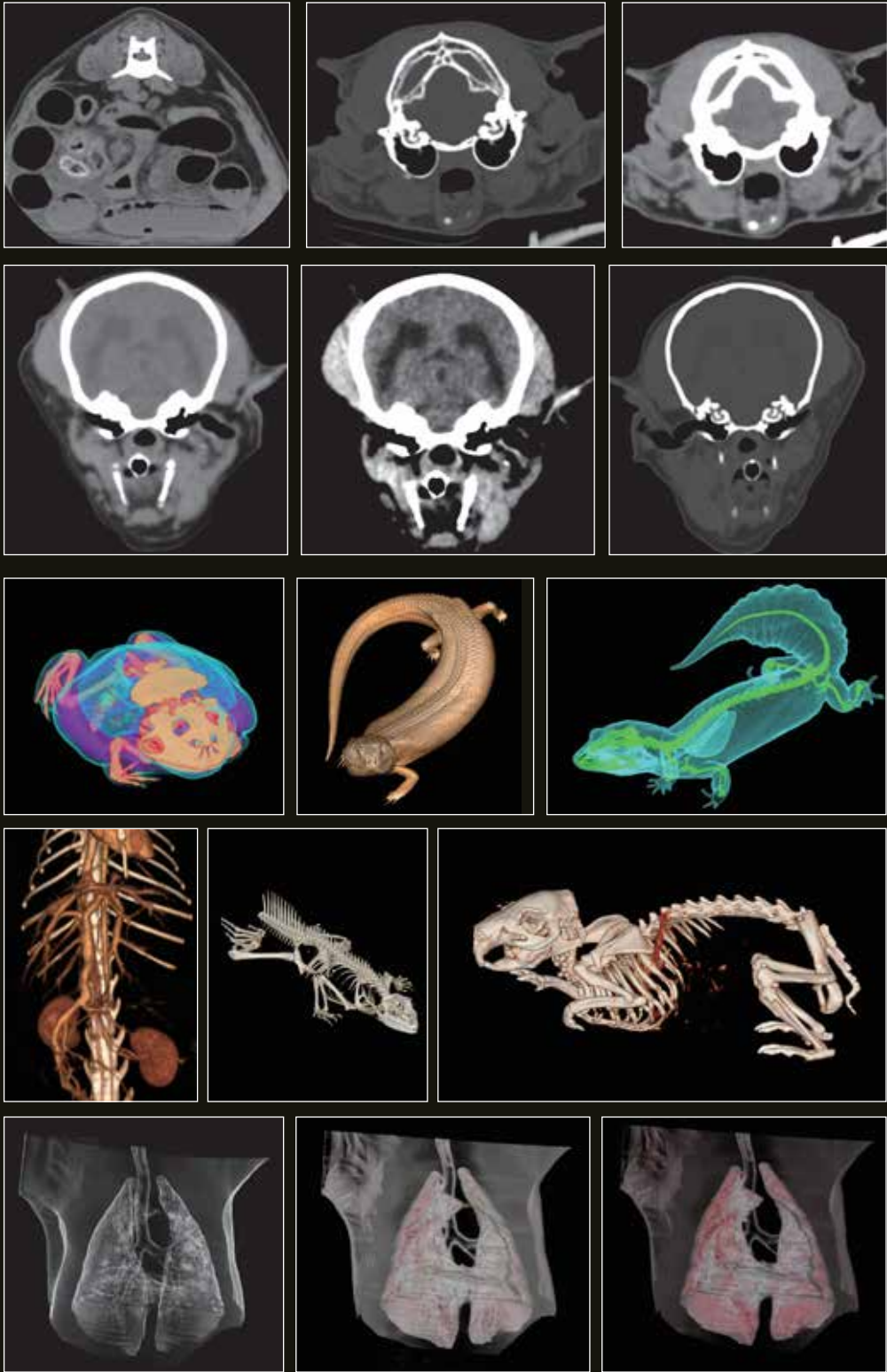
3D Abdominal Tumor



Axial Abdomen



3D Renal Stone



Flexible service solutions

Original quality core components

24 Hours Online Support

86-10-84575789

service@wandong.com.cn

**Global Service
Caring for You**

Active service

Quick response

High quality delivery process

Product upgrade service

WDM ^萬东 | **Animal care** 

Precision imaging, Caring for your pets

We are committed to meeting the ever-evolving needs of medical care, and provide advanced and reliable products and solutions for veterinary medical care, based on more than 70 years of profound accumulation of medical technology for humans and strict quality control. We respect every life and devote to continuously improve the quality of animal medical care.

WDM

TECNOIMAGEN

www.tecnoimagen.com.ar | 11-4582-2222