

WDM

New Oriental 1000N5s

/Digital Radiographic X-Ray Machine/

Precision & Vision



Floor Mounted Tube Stand DR

WDM

Beijing Wandong Medical Technology Co., Ltd.

Address: Building 3 No.9 Jiuxianqiaodong Road, Chaoyang

District, 100015, Beijing, P.R.China

Tel: +86-10-84575792/3/5/6

Fax: +86-10-84575794

Web: www.wandong.com.cn

E-mail: International@wandong.com.cn

Note: Design and specification subject to change without notice.



- 50/65/80kW generators available as options
- Fully automatic positioning intelligent control
- 100 μ m* / 139 μ m HD imaging
- Fully automatic stitching *
- Visualized remote control *
- Optional dynamic imaging *
- AI assist *









Dual-column DR

The New Oriental 1000N5s boasts a cutting-edge, high-end configuration, enabling the acquisition of high-definition images at the 100 μ m level.

Equipped with advanced clinical features such as fully automated manipulation and automatic stitching, it delivers an efficient and convenient imaging examination experience for clinical applications, catering to a variety of clinical needs.

HD Vision

- 
2.4/5G Dual-band wireless transmission
- 
17"X17" Large FOV
- 
Pixel pitch 100 μm * / 139 μm
- 
Optional dynamic FPD
- 
Low dose DQE 75%
- 
Fast charging in bucky

Low Dose Control

- 

DAP Display
Real-time radiation dose display.
- 

iAEC Function **
Comprehensive auto exposure control, accurate dose control for each body parts; No artifacts of ion chamber, improving image clarity.
- 

Detachable Oscillating Grid
Meet the low dose pediatric applications and thick body radiography needs.
- 

Linear Noise Elimination
The linear noise is eliminated while no image detail loss, keeping high edge resolution with no extra artifact generated.
- 

Intelligent Communication
Patent technology to improve transmission stability under complex electromagnetic environment.



Intelligent Control

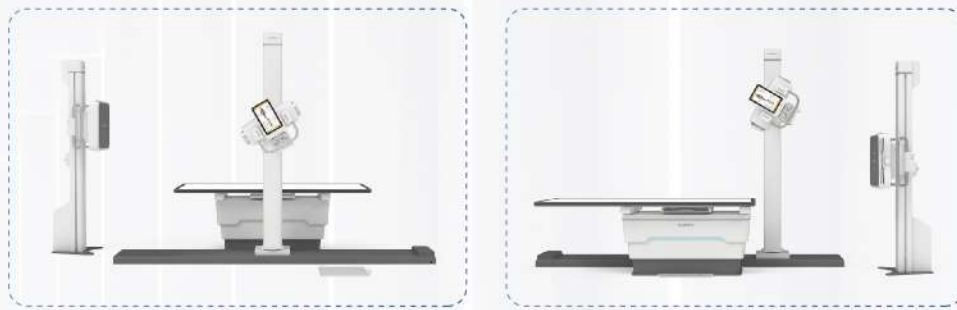
Fully Automatic Positioning

One-key automatic conversion between standing and lying positions, with 11 common positions fully automatically positioning, facilitating doctor's operations.

Bi-directional automatic tracking of the tube and detector in both vertical and horizontal positions, making positioning quick and convenient.

Electric height adjustable table, facilitating examinations for the elderly, children, and patients with moving inconvenience.

Four-way floating tabletop with electromagnetic brake, for easy operation.



“Tele-Eye” Visualization Navigation System *

Enables contactless and precise positioning across chambers, reinforcing infection control measures in the hospital, and facilitating an efficient workflow.



One-key Automatic Stitching *

Stitching program with no shifting of X-ray tube focus effectively improves success rate.

Minimized overlapping makes the stitching length longer under the same number of exposures.

AEC and histogram equalization algorithm are applied to acquire series of images at unified brightness and contrast level.



Touchscreen control, at your fingertips

- Patient information
- Positioning tutorials
- Mechanical position display
- Image preview
- APR
- Portrait/Landscape adaptive display
- Exposure data

AI Assist *

The integrated AI technology assists doctors to rapidly diagnose determined diseases which improves workflow and reduces misdiagnosis rate.

Intelligent Bone Suppression

The system automatically generates bone suppression images to facilitate lung tissue diagnosis by reducing the effect of skeletal overlap.



AI Assist Diagnostic Function for Lung Disease

Similar to the face recognition technology, the original lung image is extracted from the raw image. After 121 layer convolution neural network CheXNet analysis, the detection of tuberculosis, pneumothorax, atelectasis, pneumonia, pleural effusion and other diseases in chest image can be detected. The intelligent engine automatically outlines the focus area of chest image.

More View images Appeal new images Submit review

Bilateral **compages** of thorax are roughly symmetrical, and lung markings increase and thicken. Patchy fuzzy shadow can be seen in the right upper lung field, with unclear boundary and uneven density. No abnormality is observed in hilum shape, size and position. The mediastinum is not widened, the position is in the middle without displacement, the heart shadow is small, and the morphology is normal. Bilateral diaphragms are smooth, and costophrenic angles are sharp. There is no abnormality in the thoracic bone and chest wall soft tissue shown in the film.

Result

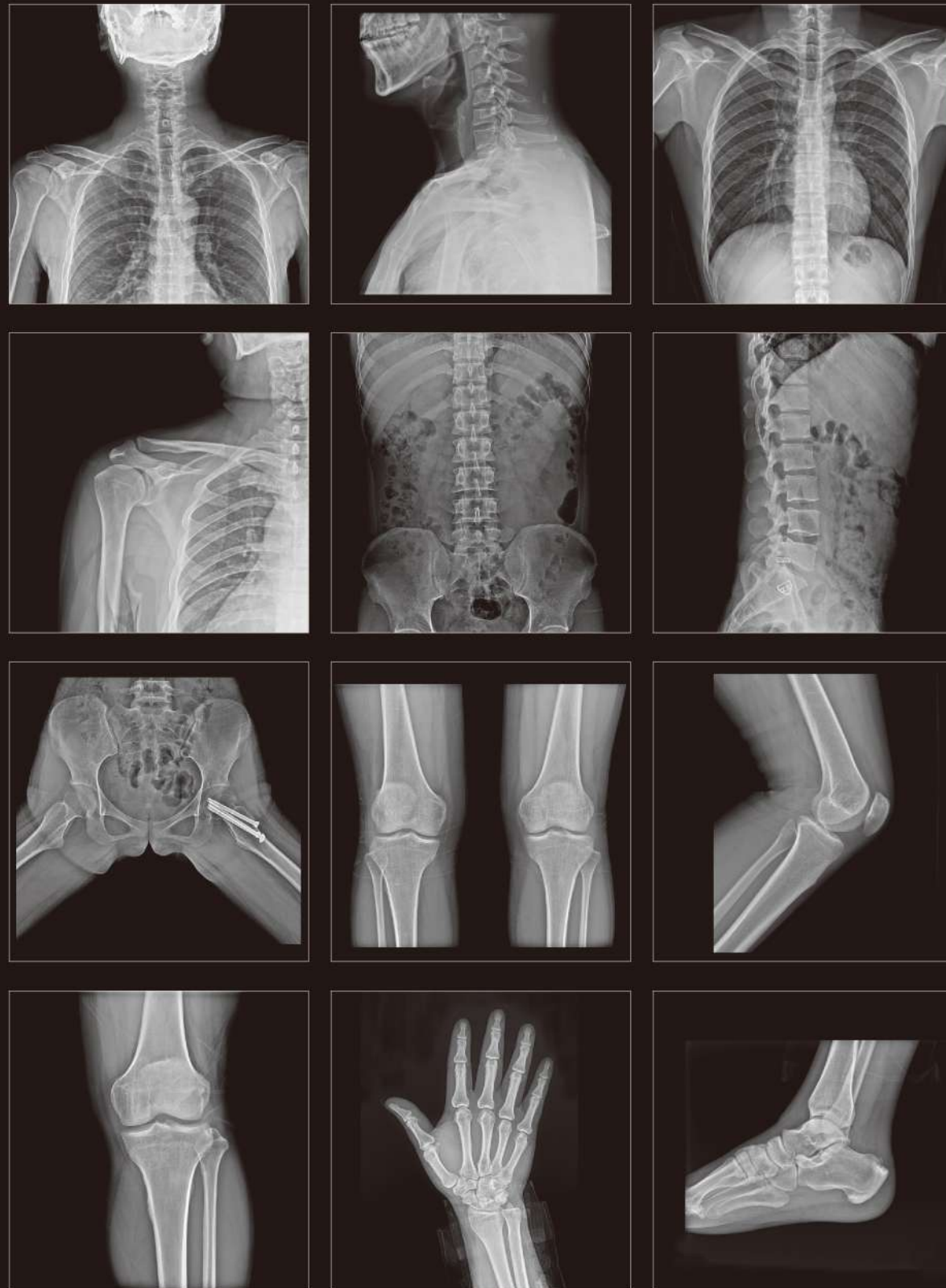
The possibility of infiltrating pulmonary **tuberculosis** in the right upper lung is high, and further examination is recommended in combination with clinical practice.

Findings:
Bilateral **compages** of thorax are roughly symmetrical, a shadow can be seen in the right upper lung field, with unclear boundary and uneven density. No abnormality is observed in hilum shape, size and displacement, the heart shadow is small, and the costophrenic angles are sharp. There is no abnormality in the thoracic bone and chest wall soft tissue shown in the film.

Impression:
The possibility of infiltrating pulmonary **tuberculosis** in the right upper lung is high, and further examination is recommended in combination with clinical practice.

ROI (Region Of Interest) Function

'ROI' can be used to make diagnostic location and description more clearly, either for clinicians or patients. It will be applied for report writing stage, just by click the statement and target relevant images. This function will lead the accuracy of image analysis effectively.



Global Service Caring for You



24 Hours Online Support

Quick response and remote technical support, on-line trouble shooting, spare parts inventory and quick delivery.

Free Software Upgrade

Fully self-developed acquisition platform, free lifetime software upgrade, always providing you the excellent experience.

Professional Team

Wandong imaging products have been installed in over 90 countries, hundreds of distributors and authorized service partners are ready to provide professional service.

Regular Maintenance

Regular maintenance by experienced and qualified engineer, guarantees the stable operation, prevents major failures, and extends the equipment life.